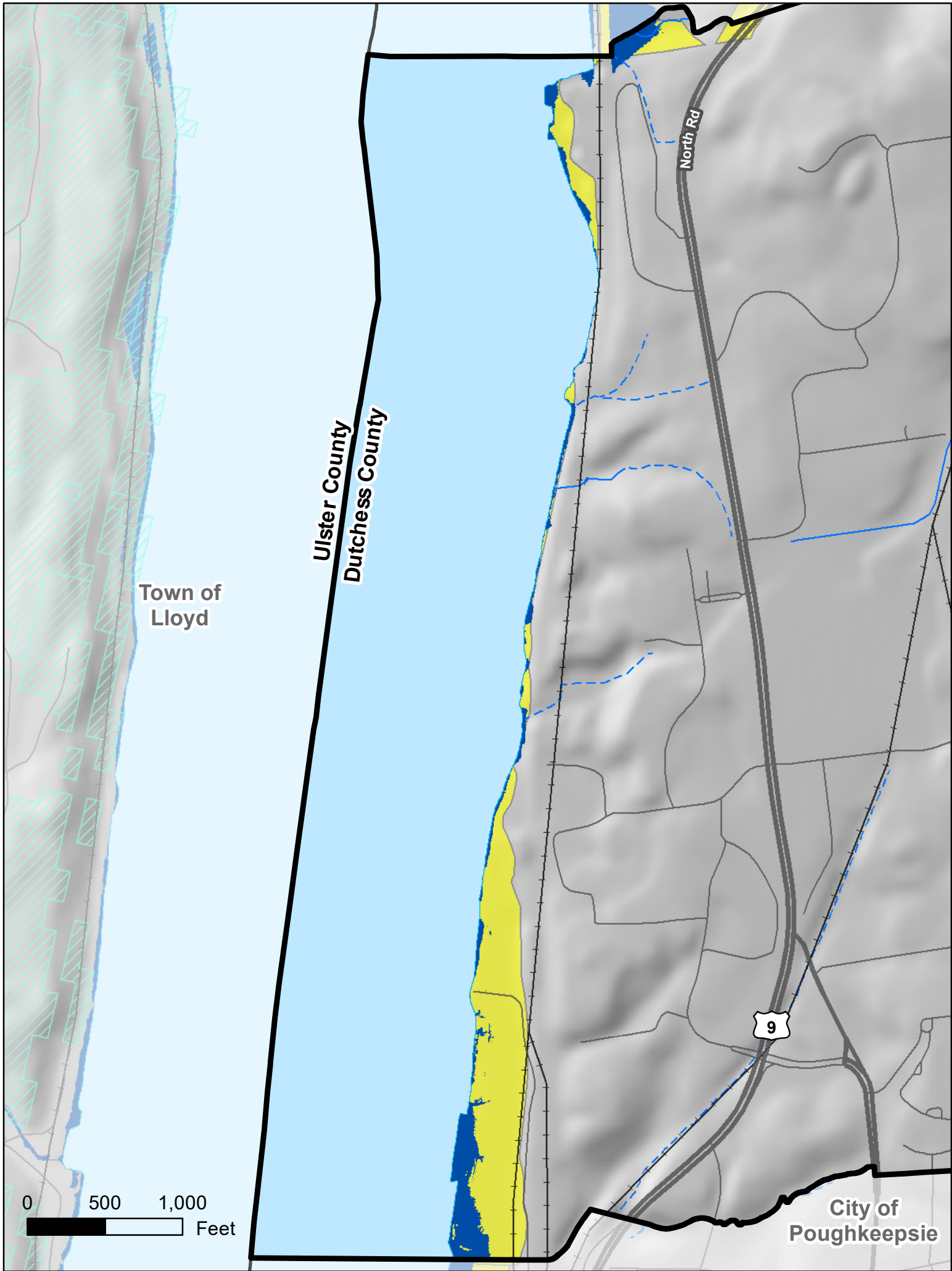
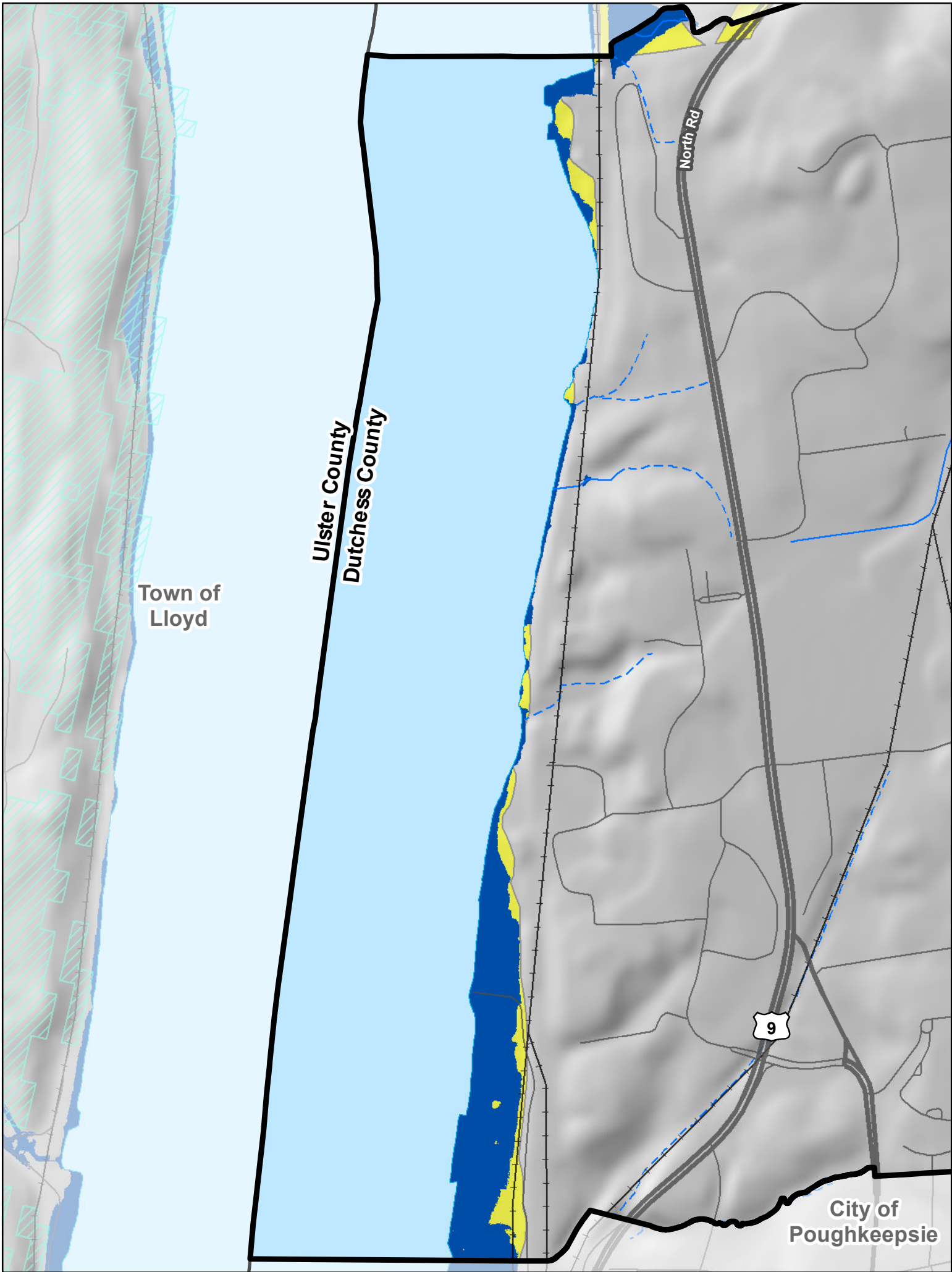


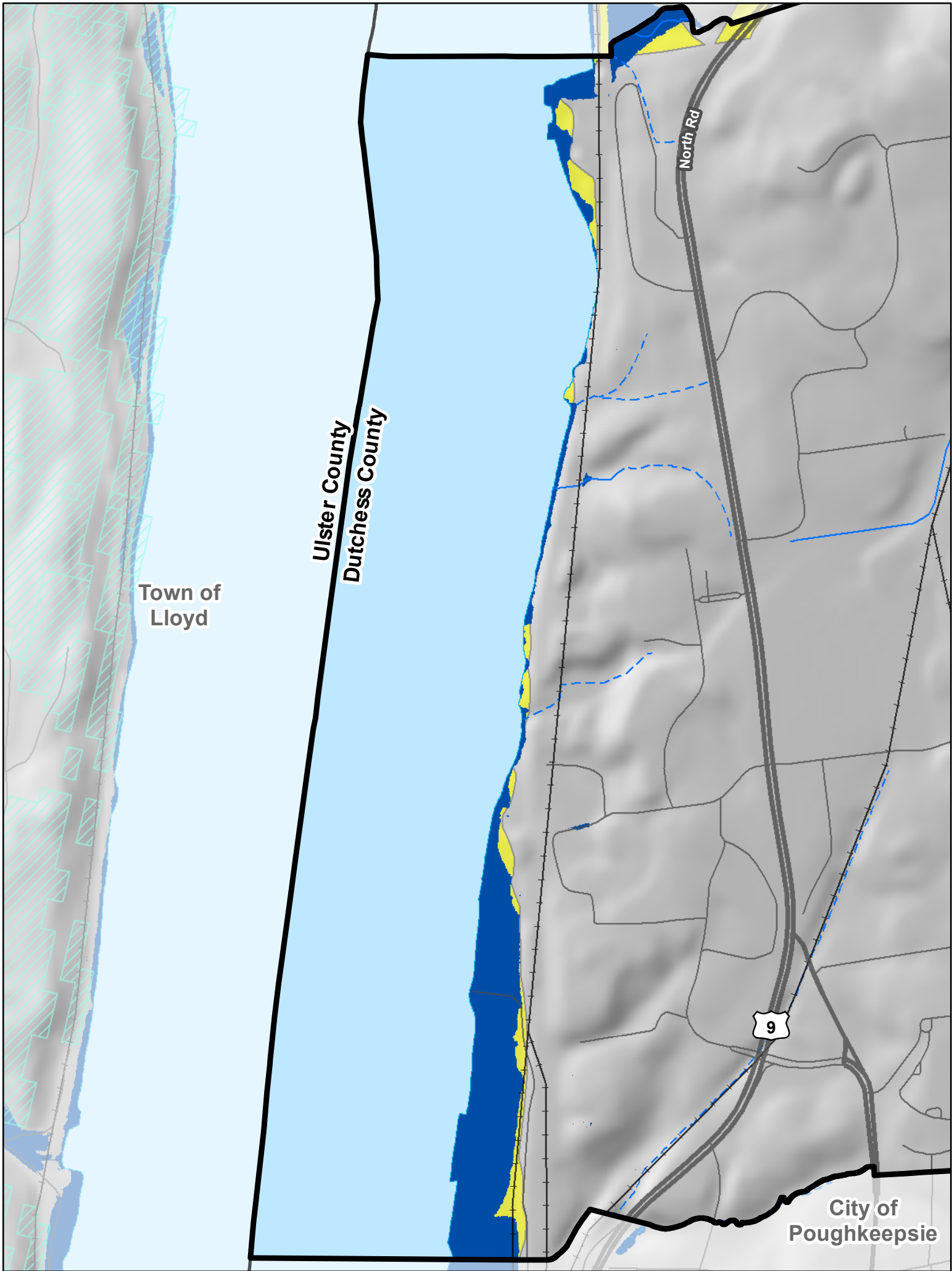
Detail Area 1



Hudson River Flood Decision- 30" Inundation
(compare to the High scenario for 2050s)

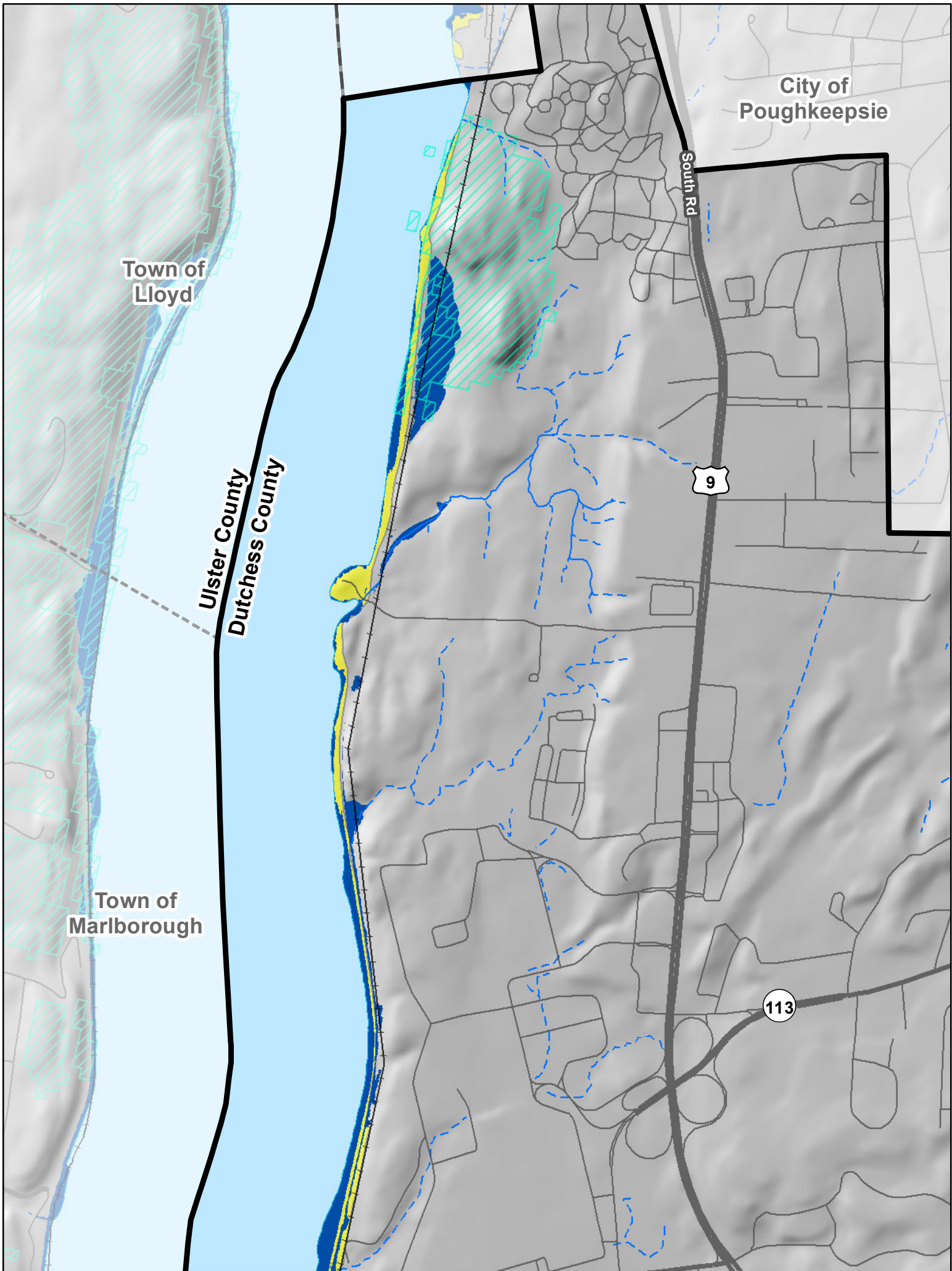
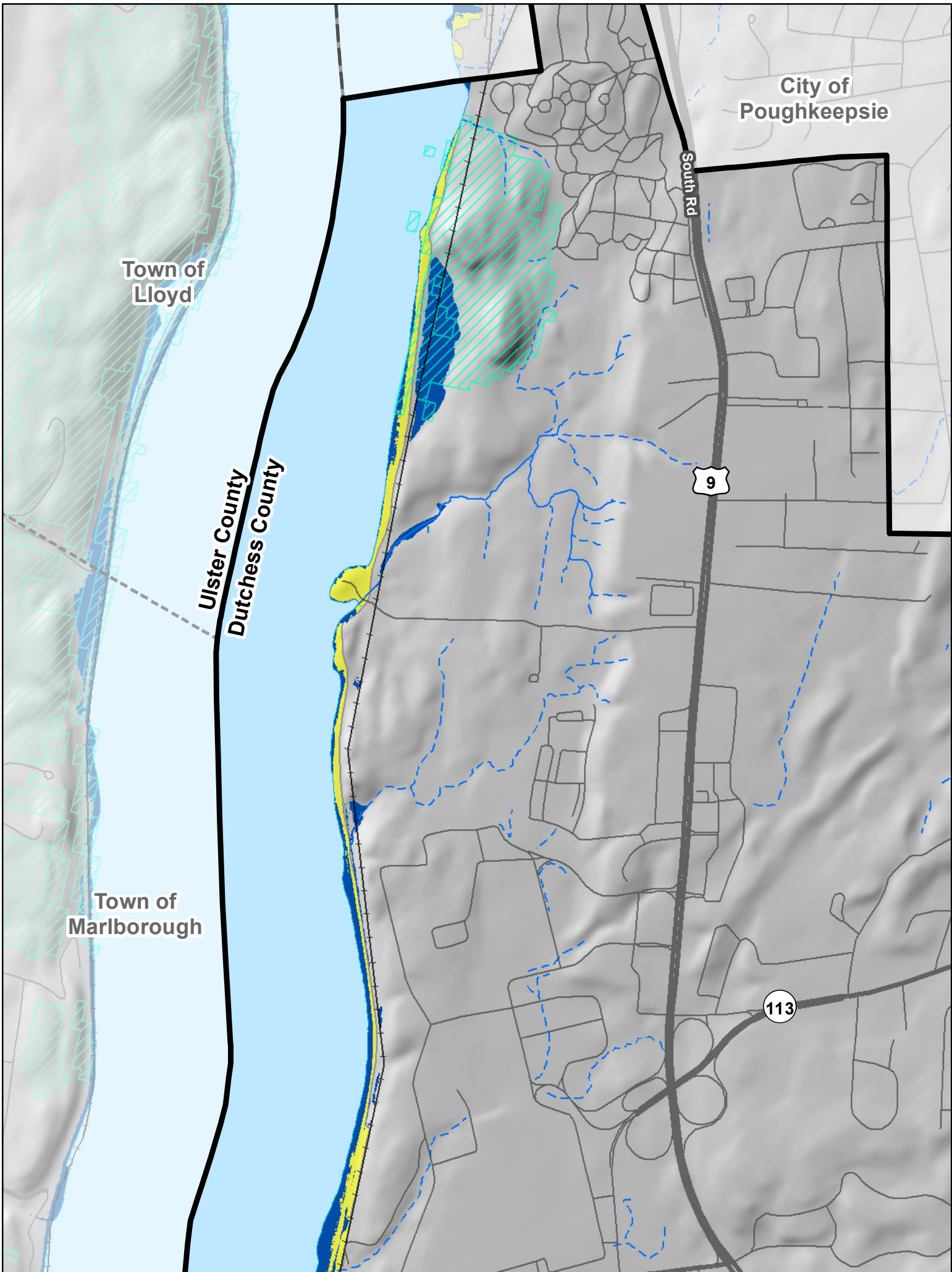
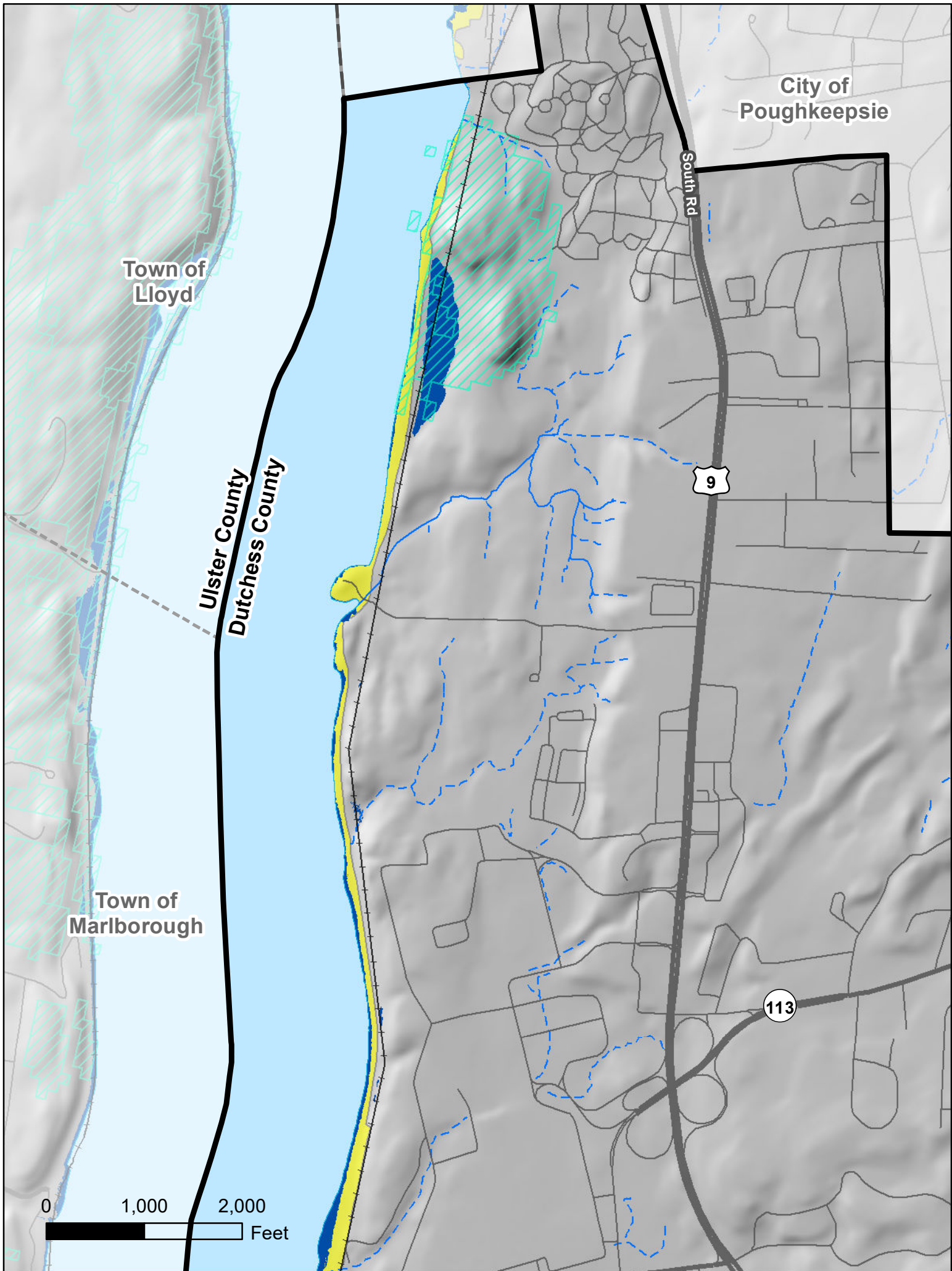


Hudson River Flood Decision- 60" Inundation
(compare to the High scenario for 2080s)



Hudson River Flood Decision- 72" Inundation
(compare to the High scenario for 2100)

Detail Area 2



TOWN OF
POUGHKEEPSIE

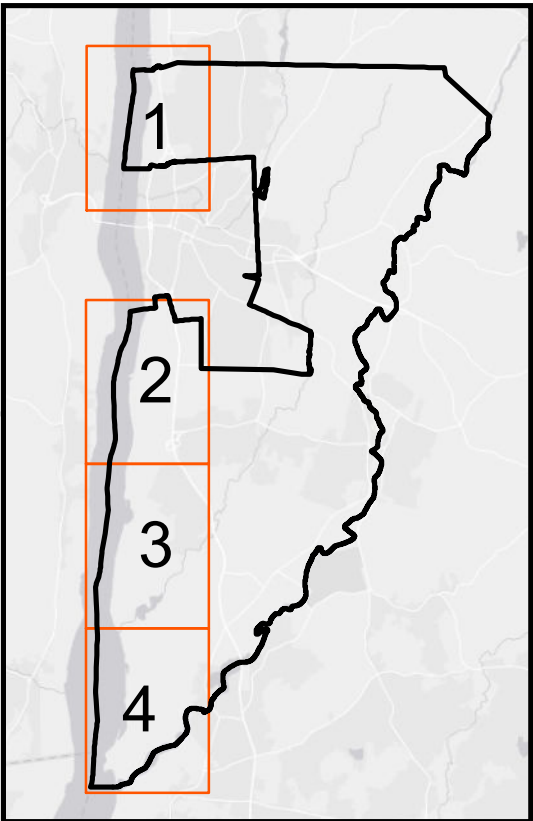
Natural Resources Inventory
& Open Space Plan

DRAFT
Sea Level Rise
Detail Areas 1 & 2

April 2021

LEGEND

- Town of Poughkeepsie
- County Boundary
- City/Town Boundary
- Village Boundary
- Railroad
- Local Roads
- Major Roads
- Perennial Streams
- Intermittent Streams
- Resilient Sites
- Current Mean High Water
- 100Year Floodplain
- Sea Level Inundation



NYSDEC Adopted Sea-Level Rise projections for
the Lower- Hudson region, 6NYCRR Part 490

Time Interval	Low Projection	Low-Medium Projection	Medium Projection	High-Medium Projection	High Projection
2020s	2 inches	4 inches	6 inches	8 inches	10 inches
2050s	8 inches	11 inches	16 inches	21 inches	30 inches
2080s	13 inches	18 inches	29 inches	39 inches	58 inches
2100	15 inches	22 inches	36 inches	50 inches	75 inches



Sources:
Esri, NYS ITS, Columbia
University Hudson River
Flood Decision, Dutchess
County, NYSDEC, The
Nature Conservancy,
Hudsonia, Town of
Poughkeepsie

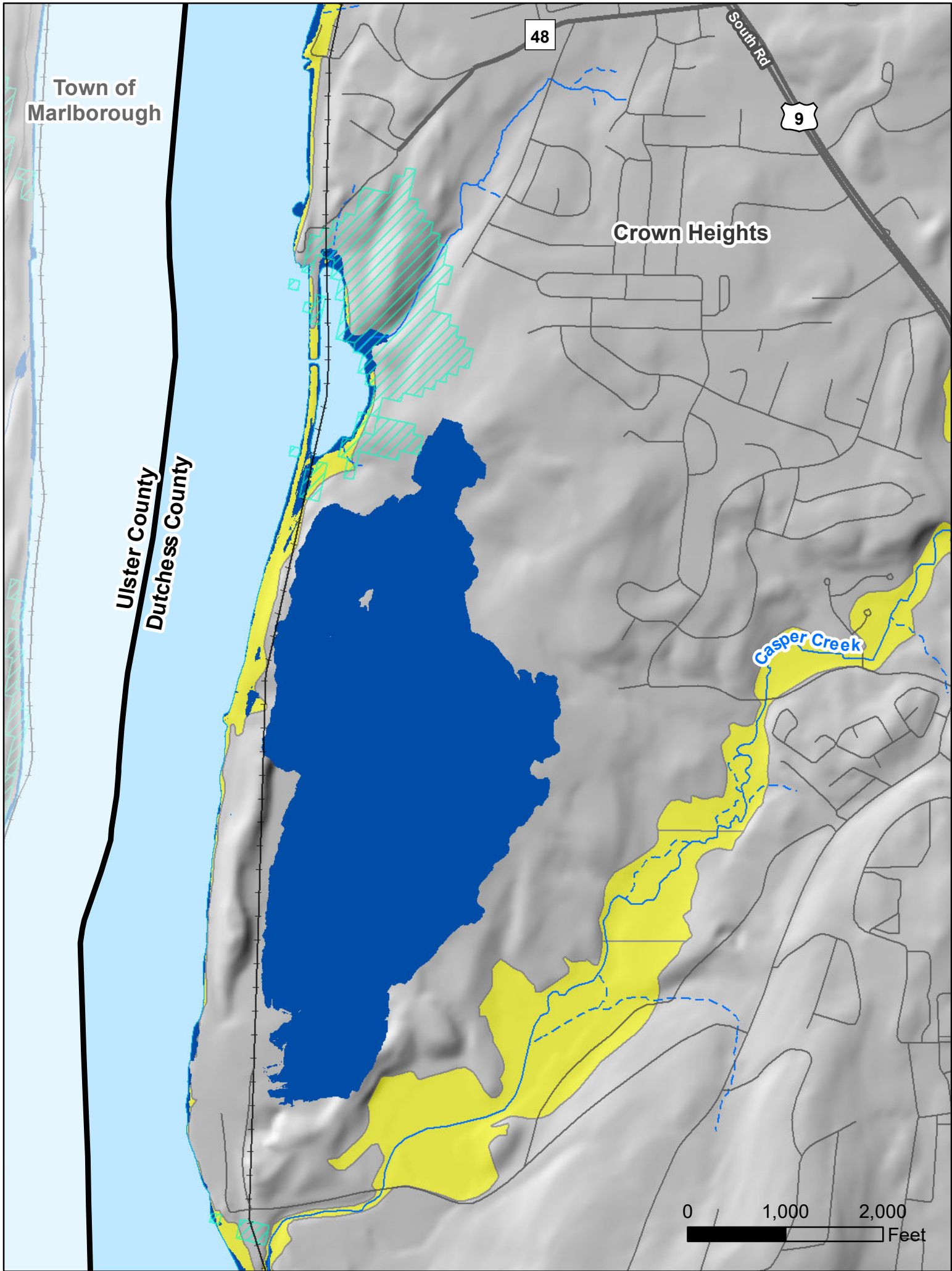


Engineering and
Land Surveying, P.C.
1533 Crescent Road - Clifton Park, NY 12065

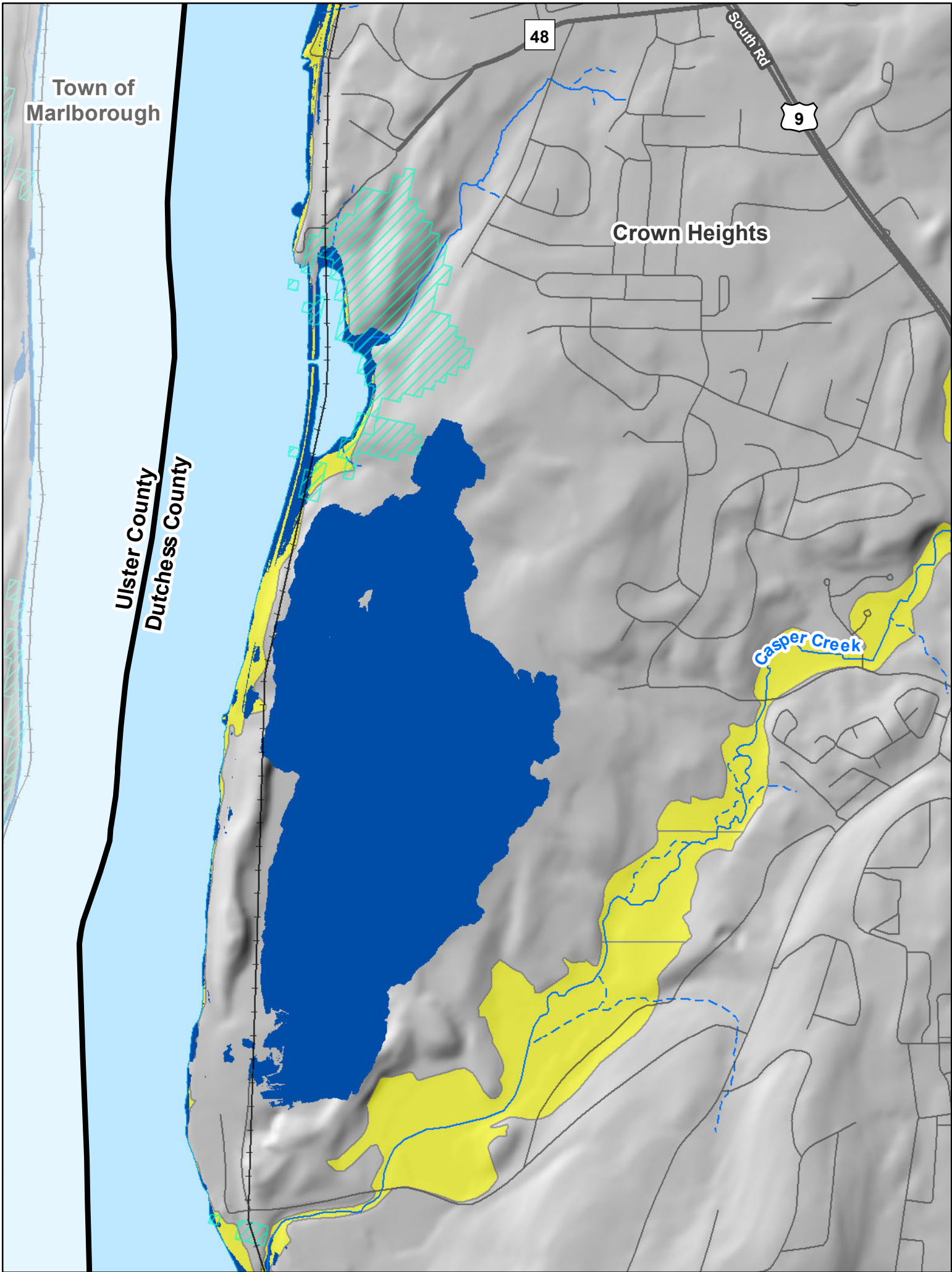


This map was prepared for illustrative purposes only and is not
suitable for engineering, surveying, or legal purposes.

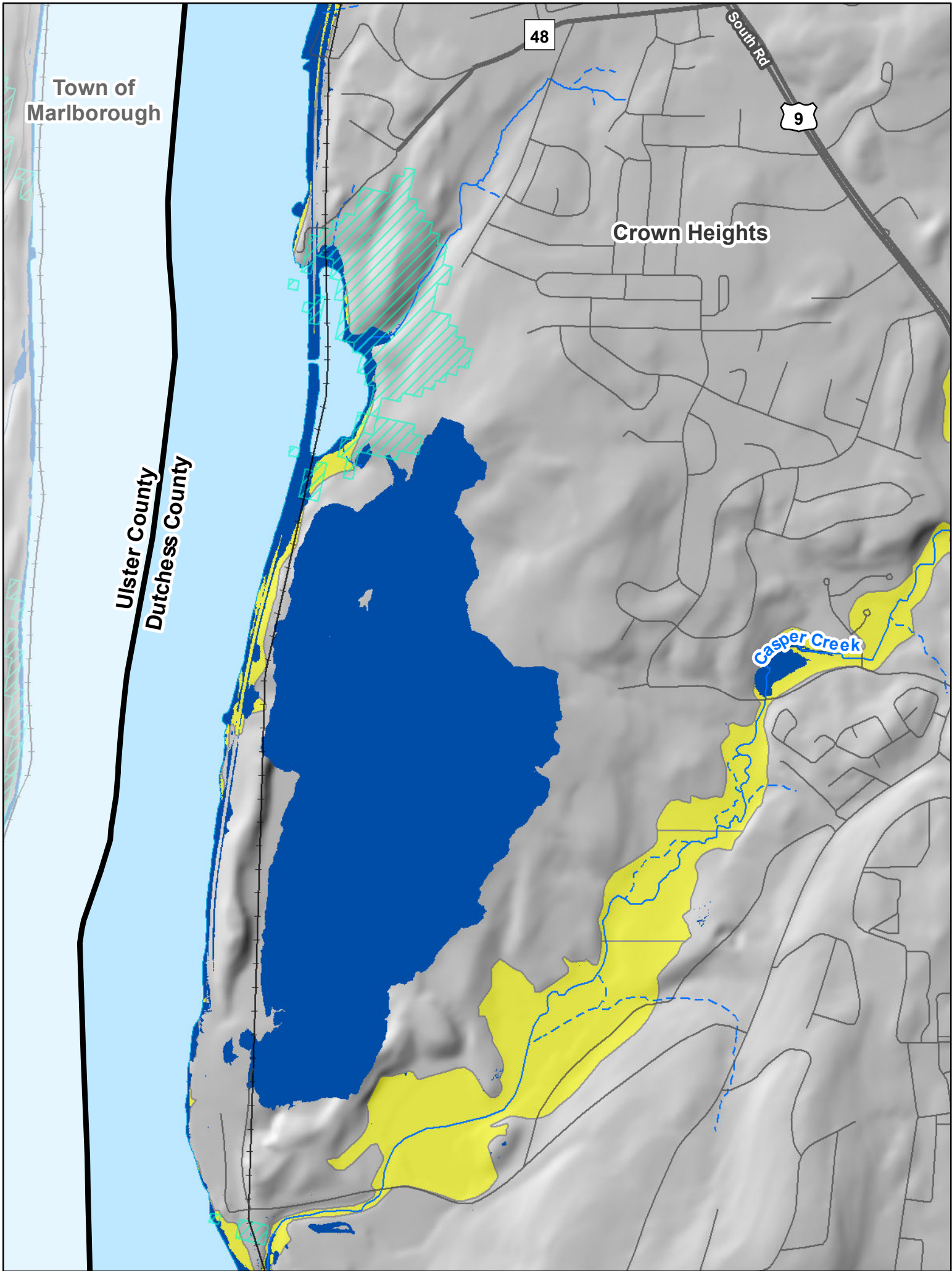
Detail Area 3



Hudson River Flood Decision- 30" Inundation
(compare to the High scenario for 2050s)

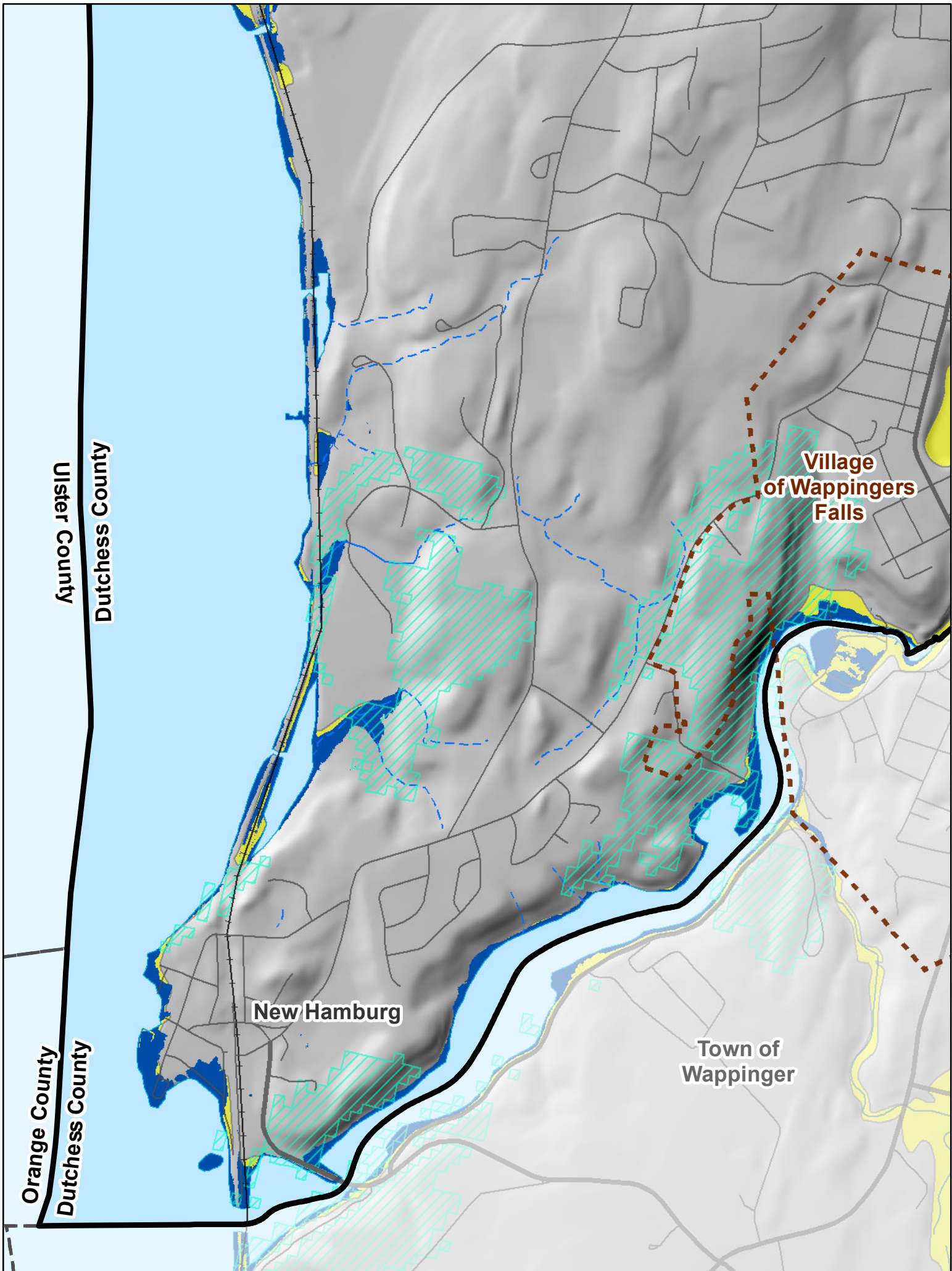
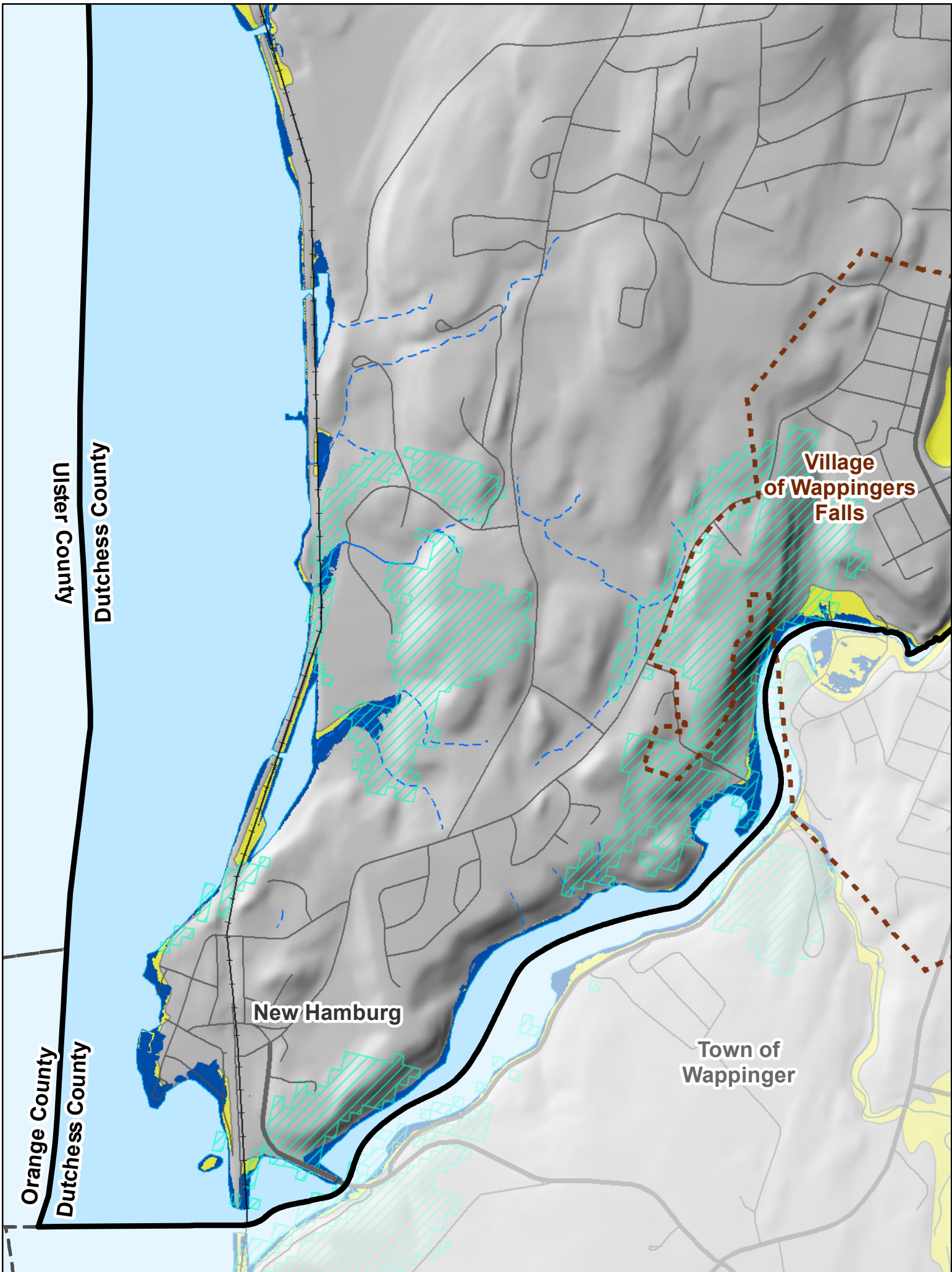
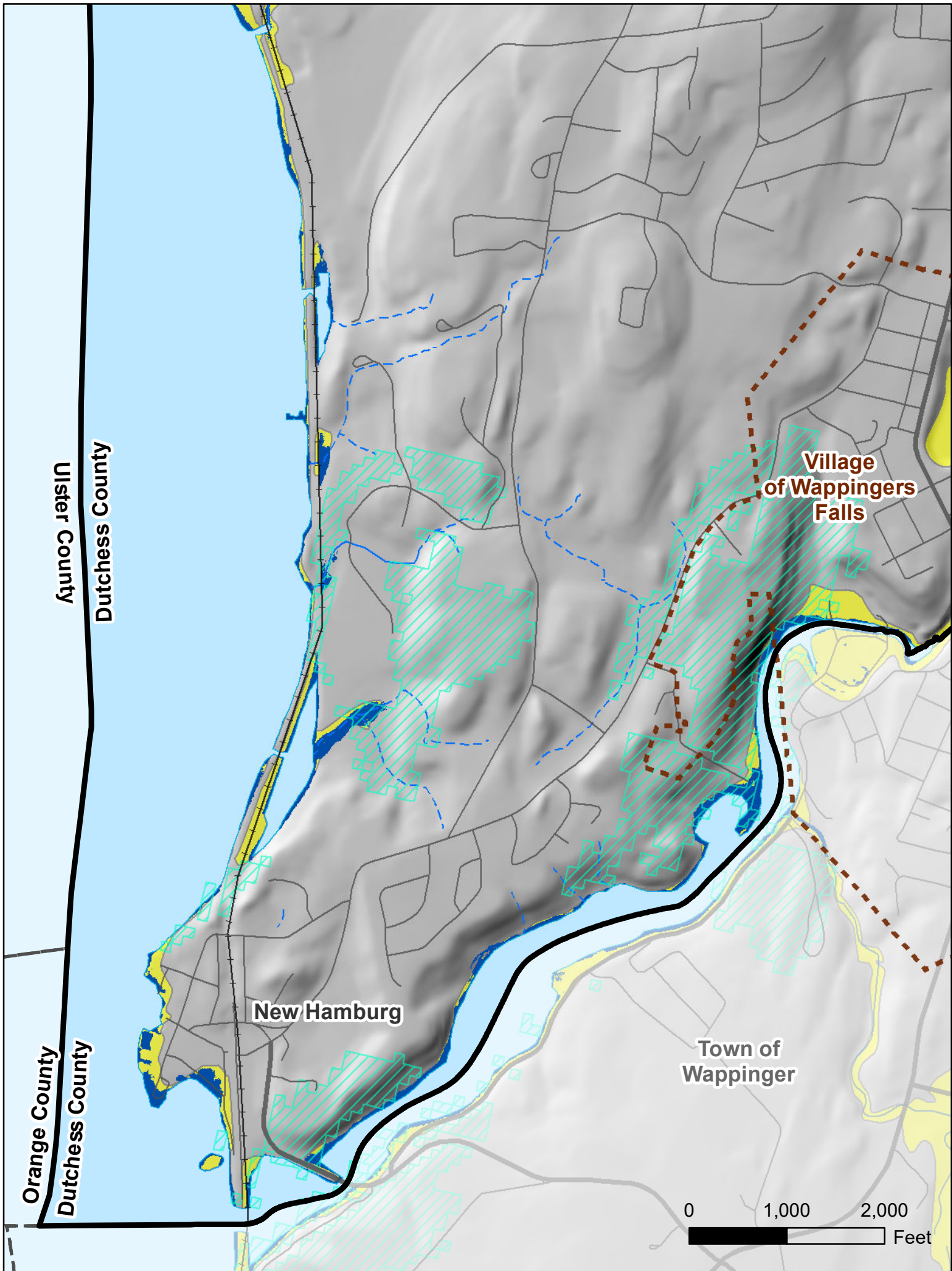


Hudson River Flood Decision- 60" Inundation
(compare to the High scenario for 2080s)



Hudson River Flood Decision- 72" Inundation
(compare to the High scenario for 2100)

Detail Area 4


















TOWN OF POUGHKEEPSIE

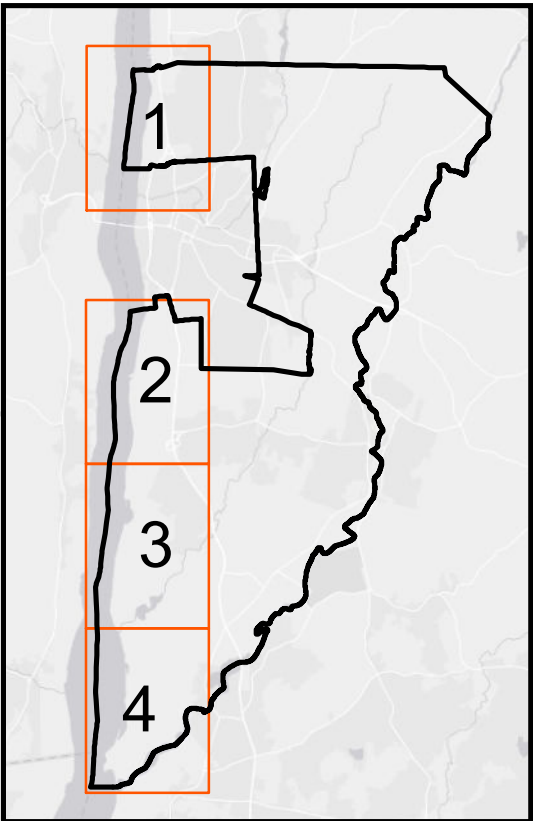
Natural Resources Inventory & Open Space Plan

DRAFT
Sea Level Rise
Detail Areas 3 & 4

April 2021

LEGEND

-  Town of Poughkeepsie
-  County Boundary
-  City/Town Boundary
-  Village Boundary
-  Local Roads
-  Major Roads
-  Railroad
-  Perennial Streams
-  Intermittent Streams
-  Resilient Sites
-  Current Mean High Water
-  Sea Level Inundation
-  100 Year Floodplain



NYSDEC Adopted Sea-Level Rise projections for
the Mid- Hudson region, 6NYCRR Part 490

Time Interval	Low Projection	Low-Medium Projection	Medium Projection	High-Medium Projection	High Projection
2020s	2 inches	4 inches	6 inches	8 inches	10 inches
2050s	8 inches	11 inches	16 inches	21 inches	30 inches
2080s	13 inches	18 inches	29 inches	39 inches	58 inches
2100	15 inches	22 inches	36 inches	50 inches	75 inches



Sources:
Esri, NYS ITS, Columbia
University Hudson River
Flood Decision, Dutchess
County, NYSDEC, Hudsonia,
Town of Poughkeepsie



Engineering and
Land Surveying, P.C.
1533 Crescent Road - Clifton Park, NY 12065



SHUMAKER
Consulting Engineering & Land Surveying, P.C.

This map was prepared for illustrative purposes only and is not
suitable for engineering, surveying, or legal purposes.