



TOWN OF POUGHKEEPSIE

NATURAL RESOURCES INVENTORY AND OPEN SPACE PLAN

NRI/Open Space Plan Steering Committee Meeting #3
February 22nd, 2020, 7:00 pm Via Zoom

A landscape photograph of a sunset over a valley. The sun is low on the horizon, casting a warm glow across the sky and the distant hills. The foreground is filled with green grass and dense trees and bushes. The word "WELCOME" is overlaid in large, white, bold, sans-serif capital letters in the center of the image.

WELCOME



[AGENDA]

1

Project Schedule
Update

2

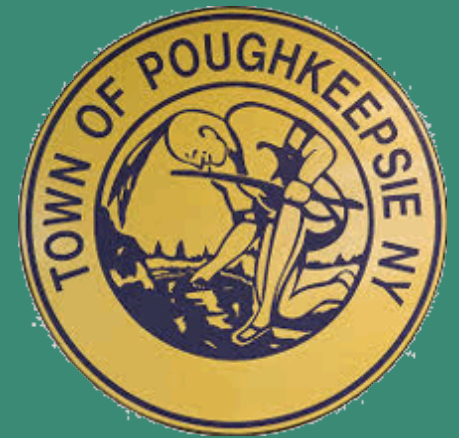
Natural Resource
Inventory Draft
Mapping

3

Public
Engagement

4

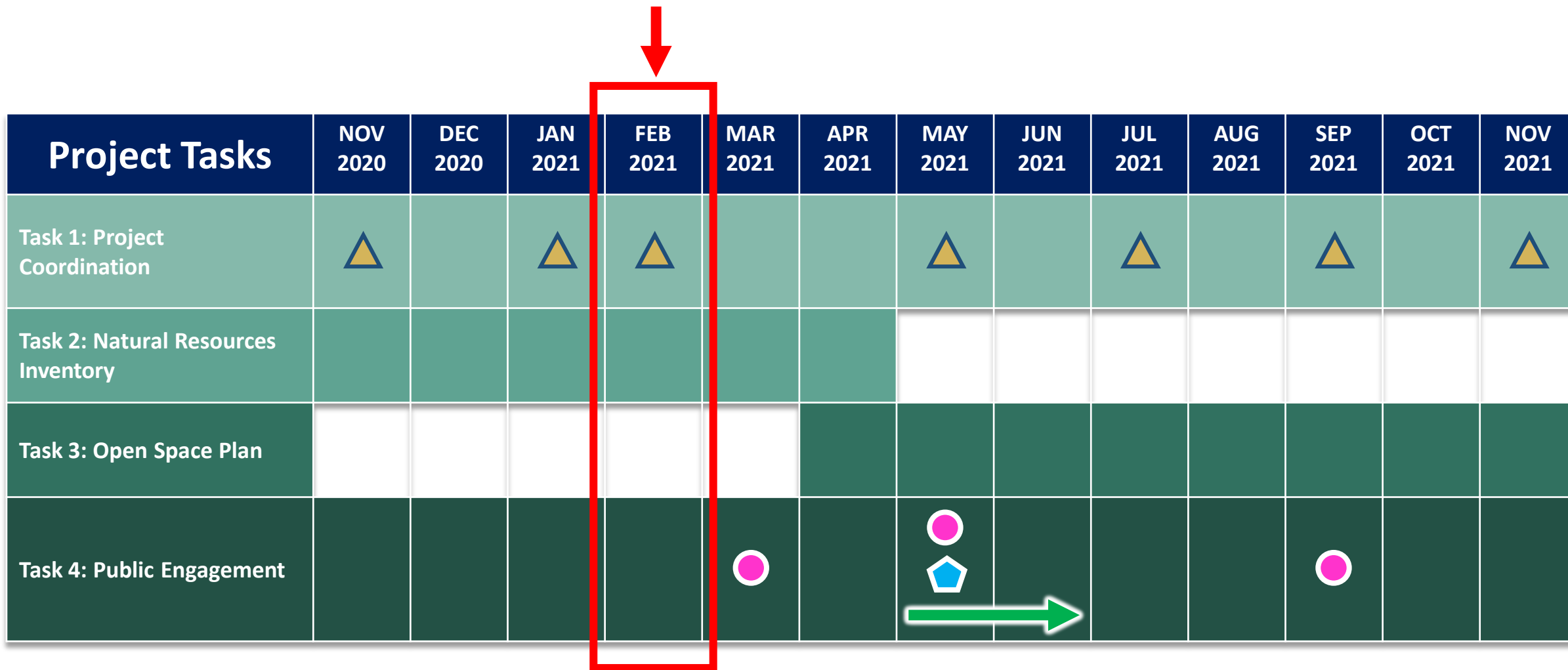
Next Steps





PROJECT SCHEDULE UPDATE

[PROJECT SCHEDULE UPDATE]



Steering Committee Meeting (In-Person or Web-Based)



Public Workshop



Stakeholder Group Meetings (In-Person or Web-Based)



Online Survey

A landscape photograph of a grassy field with trees in the background under a sunset sky. The image is framed by a teal border. The text is overlaid in the center in a large, white, sans-serif font.

NATURAL RESOURCE INVENTORY DRAFT MAPPING

[NRI DRAFT MAPPING]

- Existing conditions & resources
Town-wide
- 22 maps with multiple data layers
- Over 80 unique datasets
- Data gathered from NYSDEC, Hudsonia, NYSGIS, USGS, USDA, EPA, Dutchess County, Town of Poughkeepsie, etc.



Photo Credit: Jeffrey Anzevino



[NRI DRAFT MAPPING LIST]

1. Base Map
2. Aerial Imagery
3. Elevation & Steep Slopes
4. Bedrock Geology *
5. Surficial Geology *
6. Soils *
7. Drinking Water Resources
8. Watersheds *
9. Flood Hazard Areas *
10. Stream Habitats
11. Wetlands
12. Wetland Habitats
13. Habitat

14. Important Biodiversity Areas
15. Coastal Habitats
16. Hudson River Shoreline
17. Large Forests
18. Sea Level Rise & Climate Resilience*
19. Zoning, Tax Parcels
20. Brownfields, Waste Sites, & Regulated Facilities
21. Agricultural Resources
22. Cultural & Historic Sites

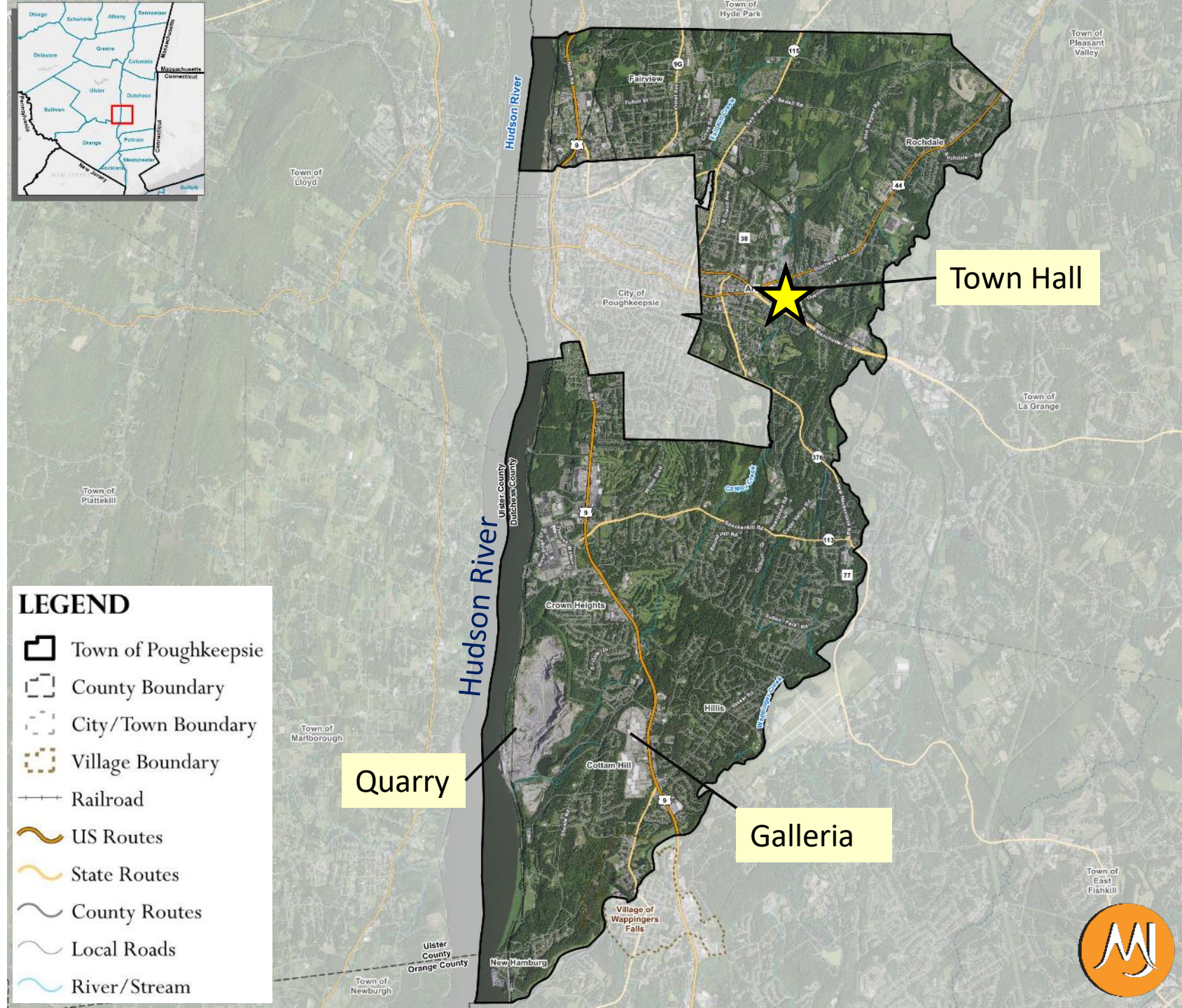
** Still in progress*



[NRI MAPPING]

Aerial Imagery

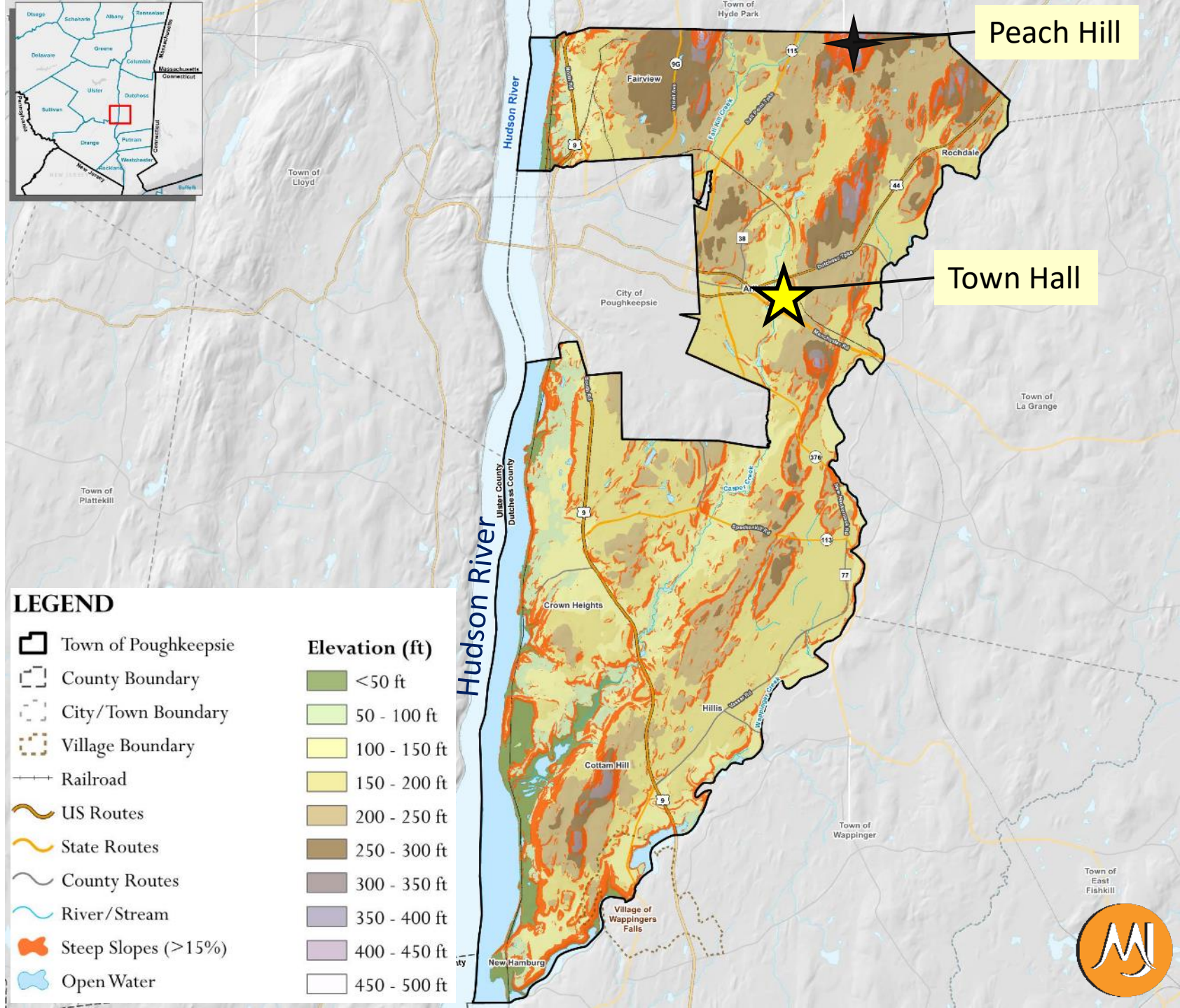
- National Agriculture Imagery Program - 2019 Imagery
- Hamlets include:
 - Fairview
 - Rochdale
 - Arlington
 - Crown Heights
 - Hillis
 - Cottam Hill
 - New Hamburg



[NRI MAPPING]

Topography & Steep Slopes

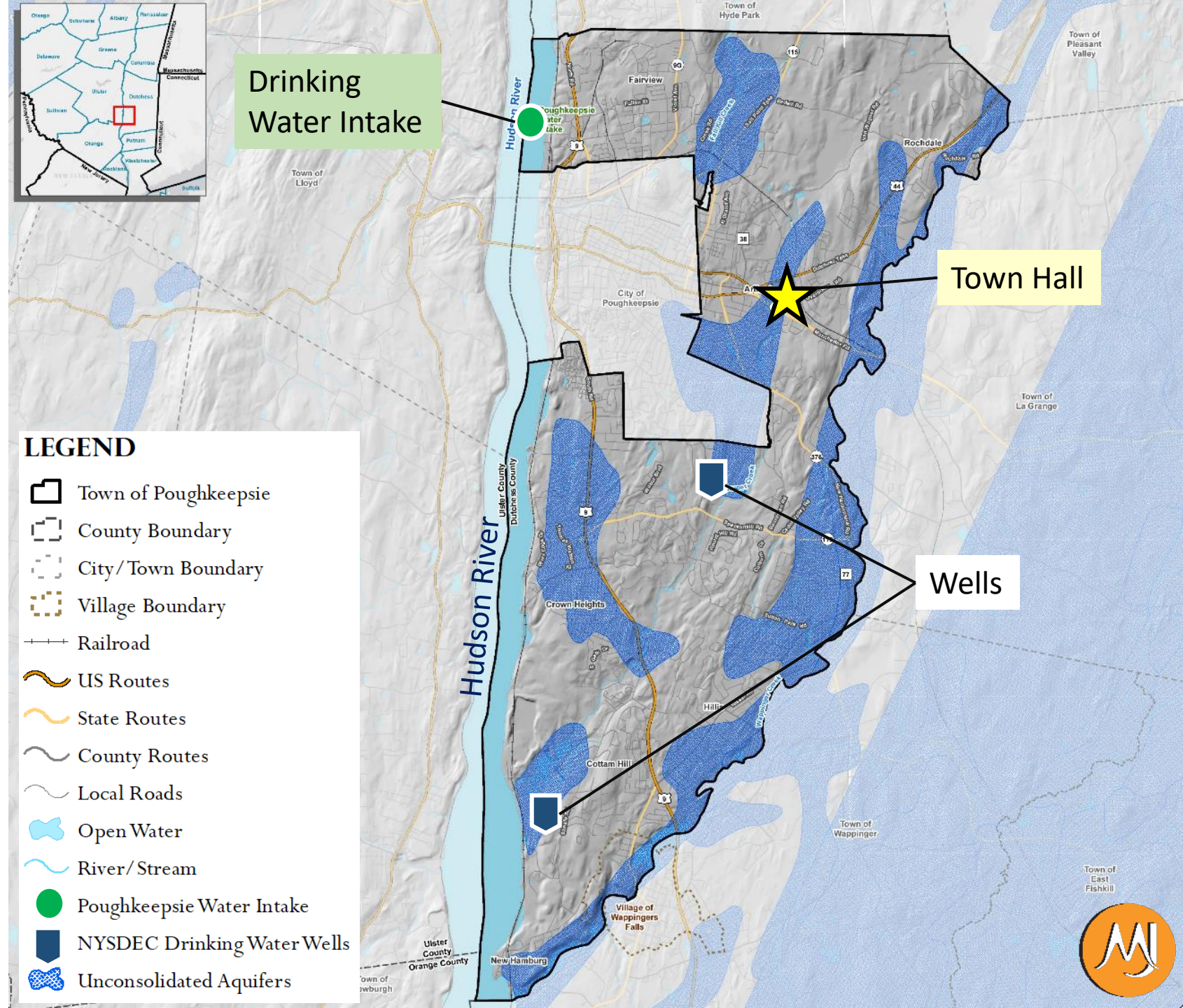
- USGS Digital Elevation Data
 - Highest Point: Peach Hill (485 ft)
 - Lowest Point: Hudson River (0 ft)
- Steep Slopes
 - Areas of land grade > 15%



[NRI MAPPING]

Drinking Water Resources

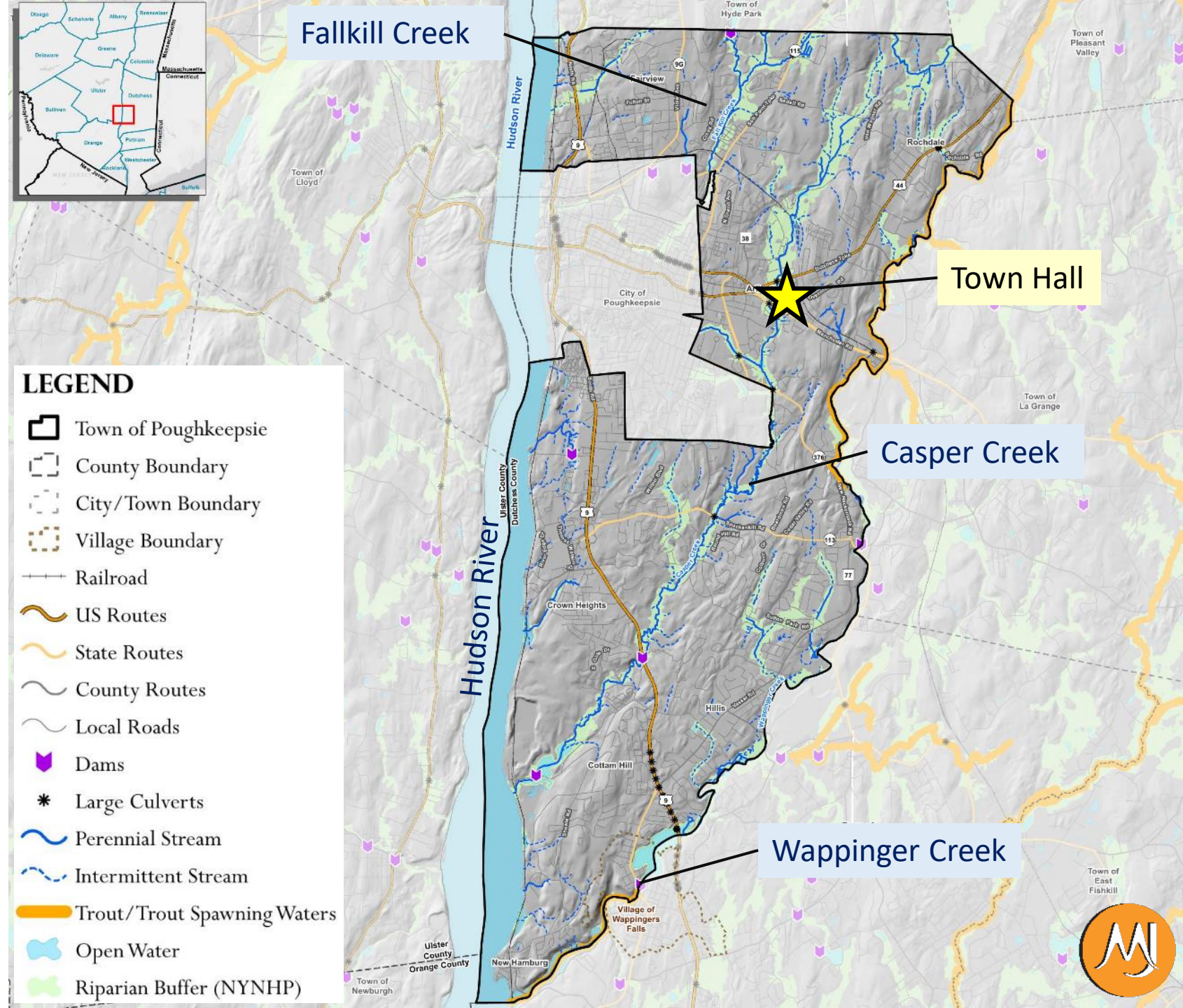
- Unconsolidated Aquifers
 - Sand/Gravel deposits
- Poughkeepsie Water Treatment Plant Intake
- NYSDEC Drinking Water Wells



[NRI MAPPING]

Stream Habitats

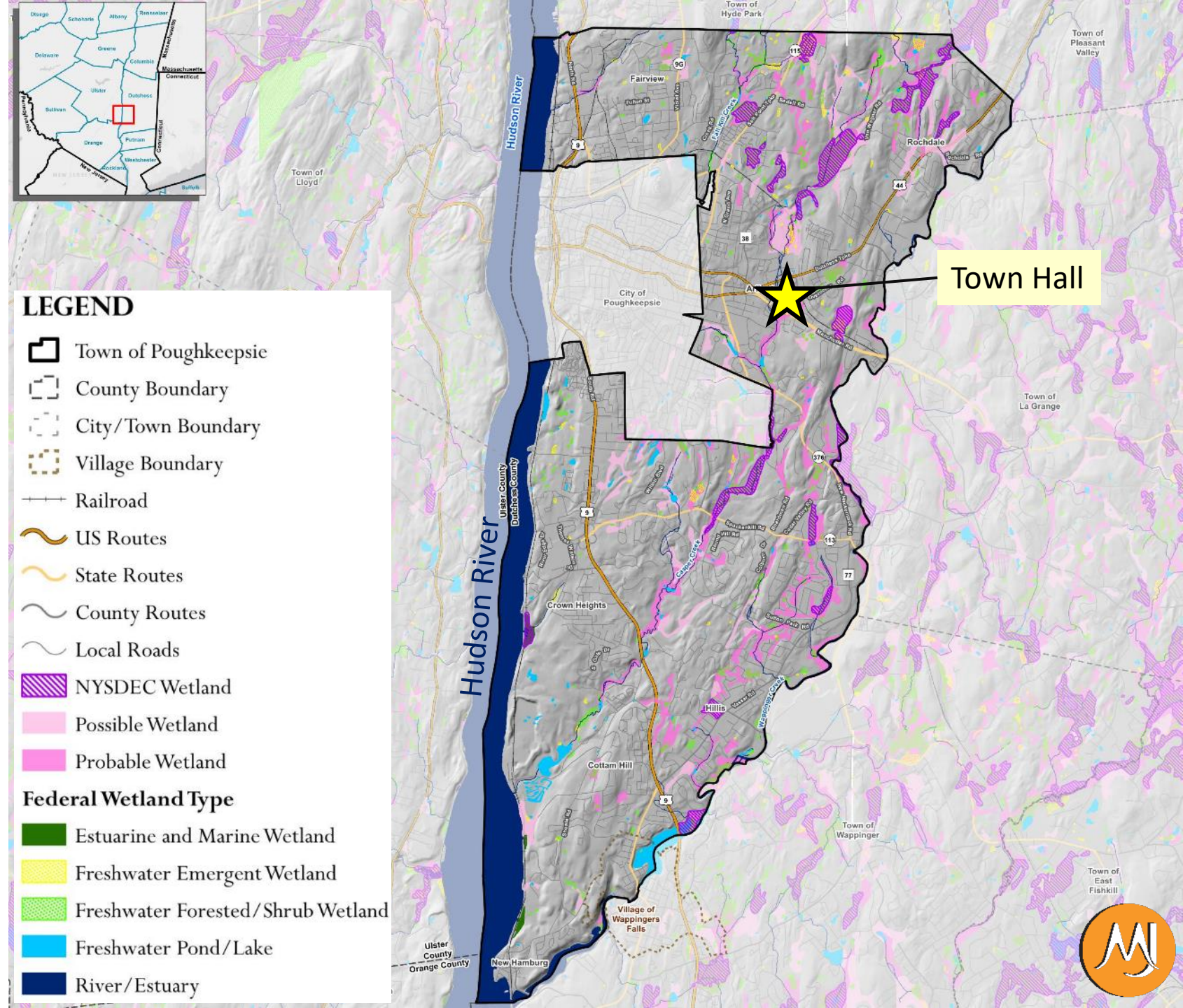
- Primary Stream Habitats:
 - Hudson River
 - Fallkill Creek
 - Casper Creek
 - Wappinger Creek
- Hudsonia Perennial & Intermittent Streams
- NYSDEC Trout/ Trout Spawning Waters



[NRI MAPPING]

Wetlands

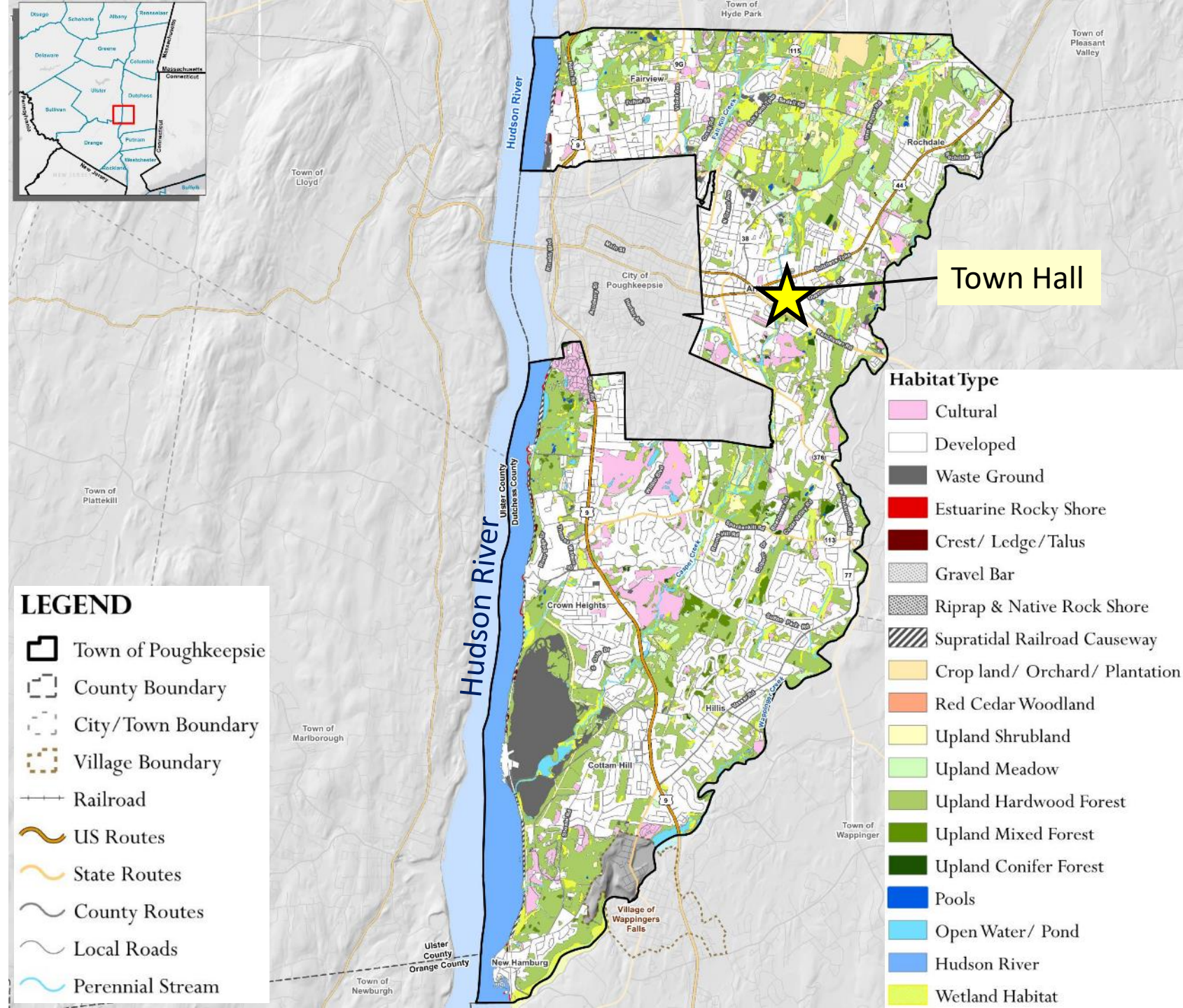
- State Wetlands
 - Regulated by NYSDEC
 - Freshwater wetlands
 - 500 Acres
- Federal Wetlands
 - Satellite derived
 - Rivers, estuaries, marine & freshwater wetlands
 - 2,400 Acres
- Probable/Possible Wetlands
 - Based on soil drainage type from USDA
 - 2,300 acres



[NRI MAPPING]

Ecologically Significant Habitats

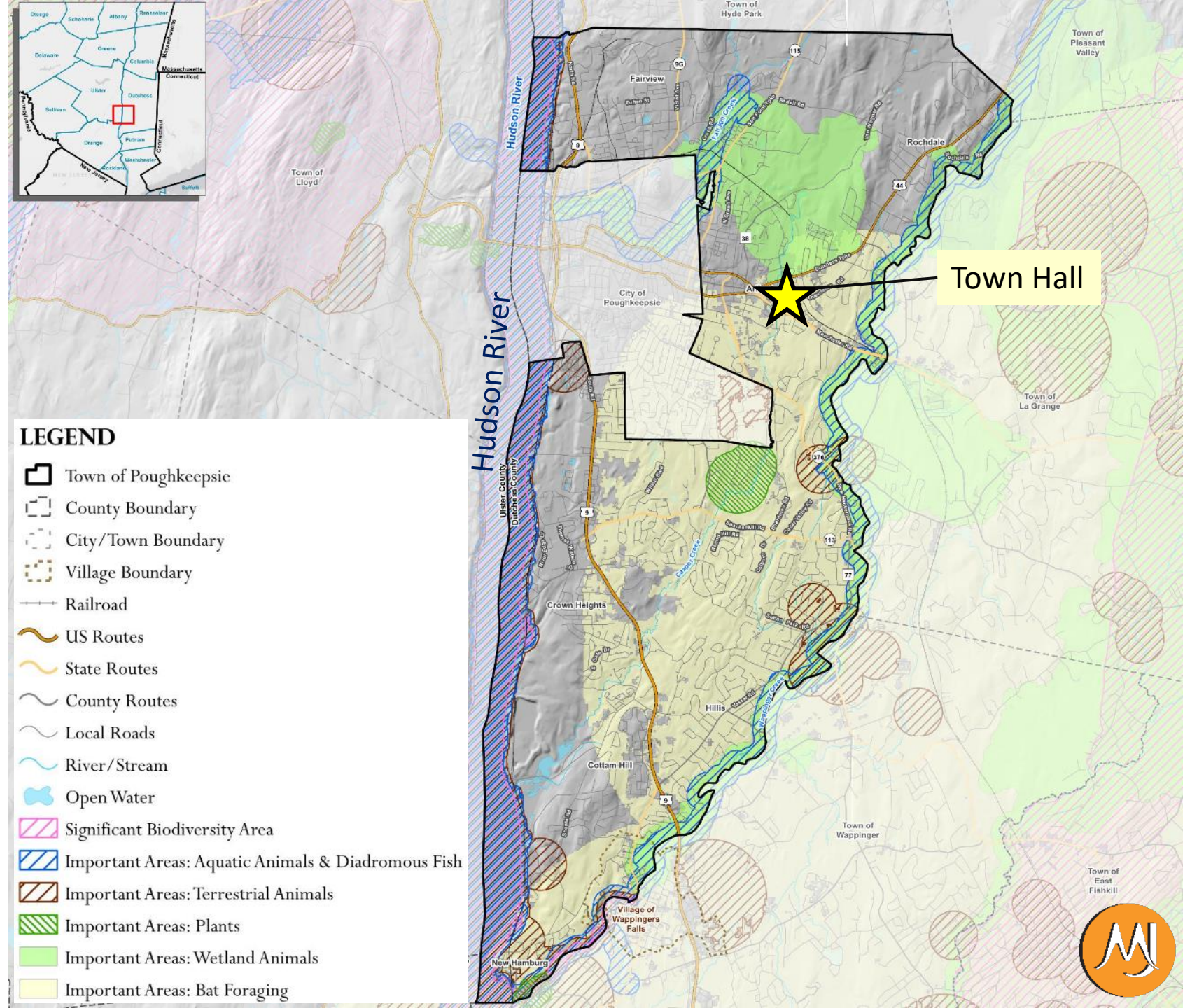
- Hudsonia Significant Habitats Report (2009)
- All areas in Town classified
- Larger Habitat Types:
 - Upland Hardwood Forest (4,400 Ac)
 - Hudson River (1,500 Ac)
 - Cultural (1,100 Ac)
 - Upland Meadow (700 Ac)



[NRI MAPPING]

Important Biodiversity Areas

- Significant Biodiversity Areas
 - Concentrated areas of biodiversity
 - Mid Hudson River Area
- Important Areas
 - Through NY Natural Heritage Program
 - Habitats that support rare or specific species
 - Larger Areas:
 - Bat Foraging (50% Town)
 - Wetland Animals (3K Ac)



Coastal Habitats

-
- LEGEND**
- Town of Poughkeepsie
 - County Boundary
 - City/Town Boundary
 - Village Boundary
 - Railroad
 - US Routes
 - State Routes
 - County Routes
 - Local Roads
 - Open Water
 - River/Stream
 - Submerged Aquatic Vegetation
 - Tidal Wetlands
 - Significant Coastal Fish and Wildlife Habitat
 - Significant Natural Communities

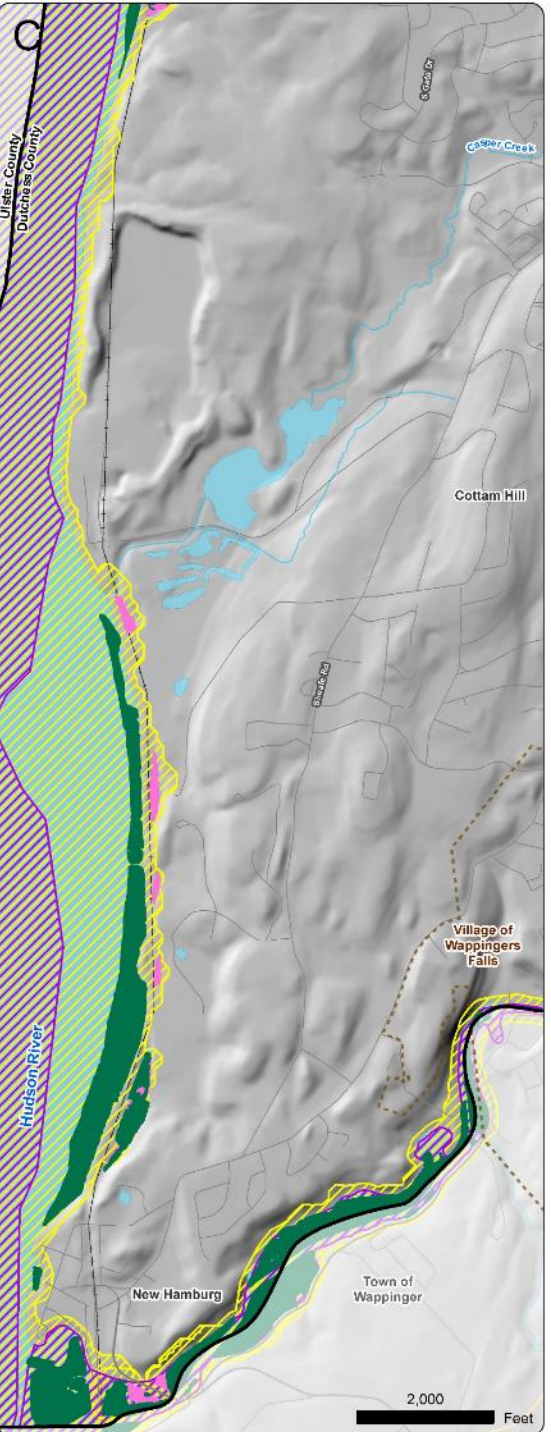
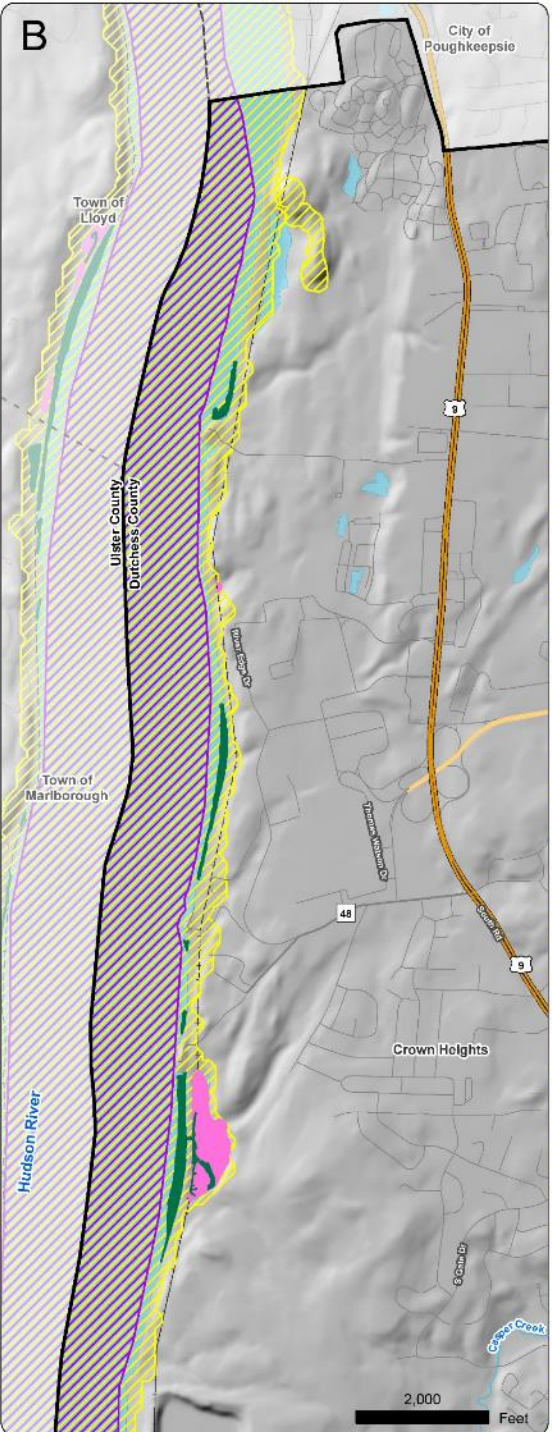
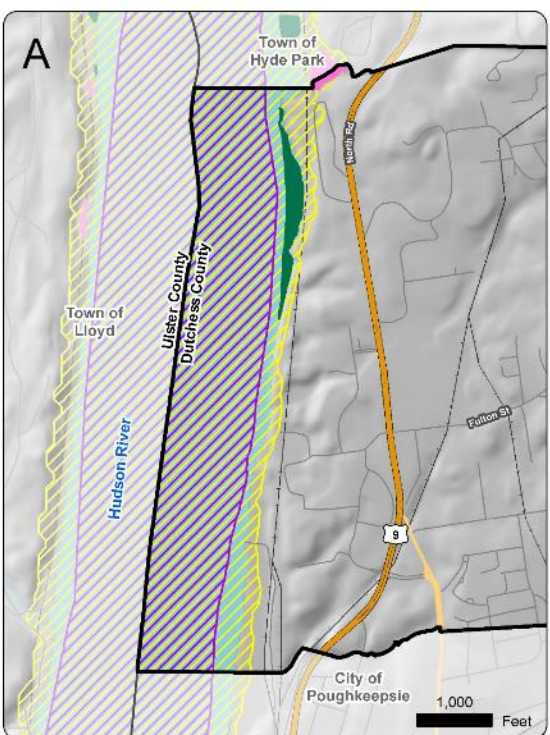
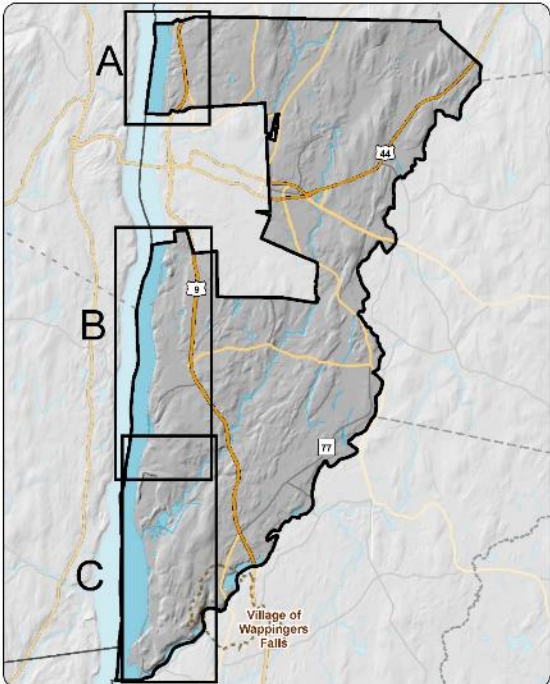


[NRI MAPPING]

Coastal Habitats

LEGEND

- Town of Poughkeepsie
- County Boundary
- City/Town Boundary
- Village Boundary
- Railroad
- US Routes
- State Routes
- County Routes
- Local Roads
- Open Water
- River/Stream
- Submerged Aquatic Vegetation
- Tidal Wetlands
- Significant Coastal Fish and Wildlife Habitat
- Significant Natural Communities



Hudson River Shoreline

- [illegible]





[NRI MAPPING]

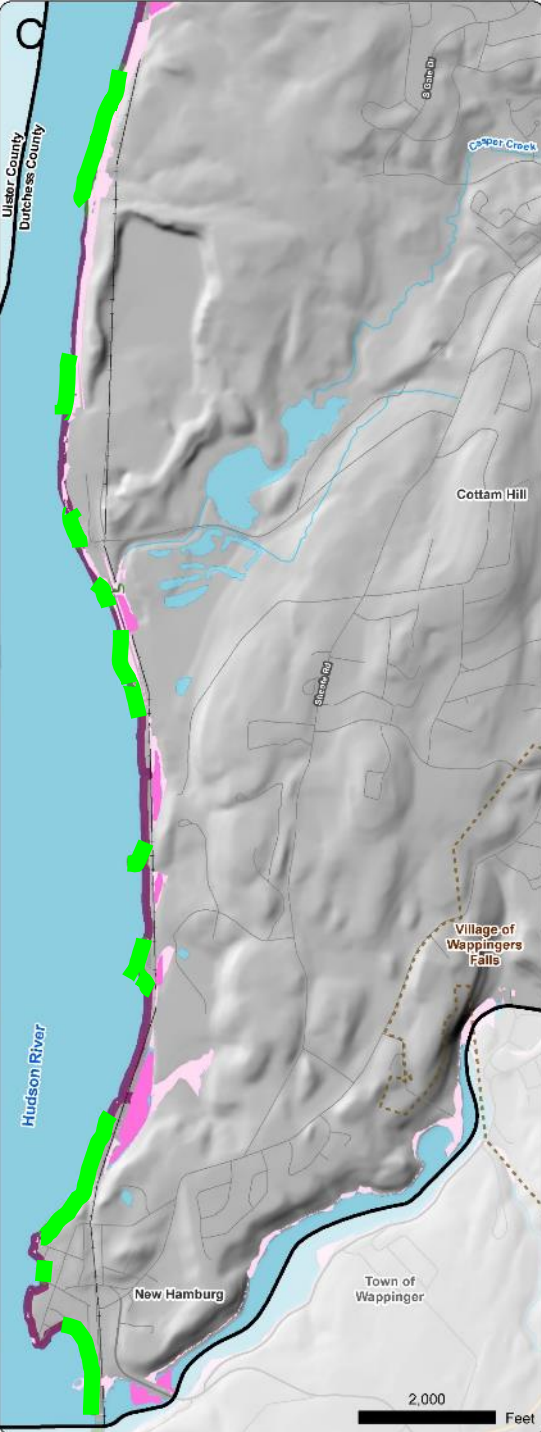
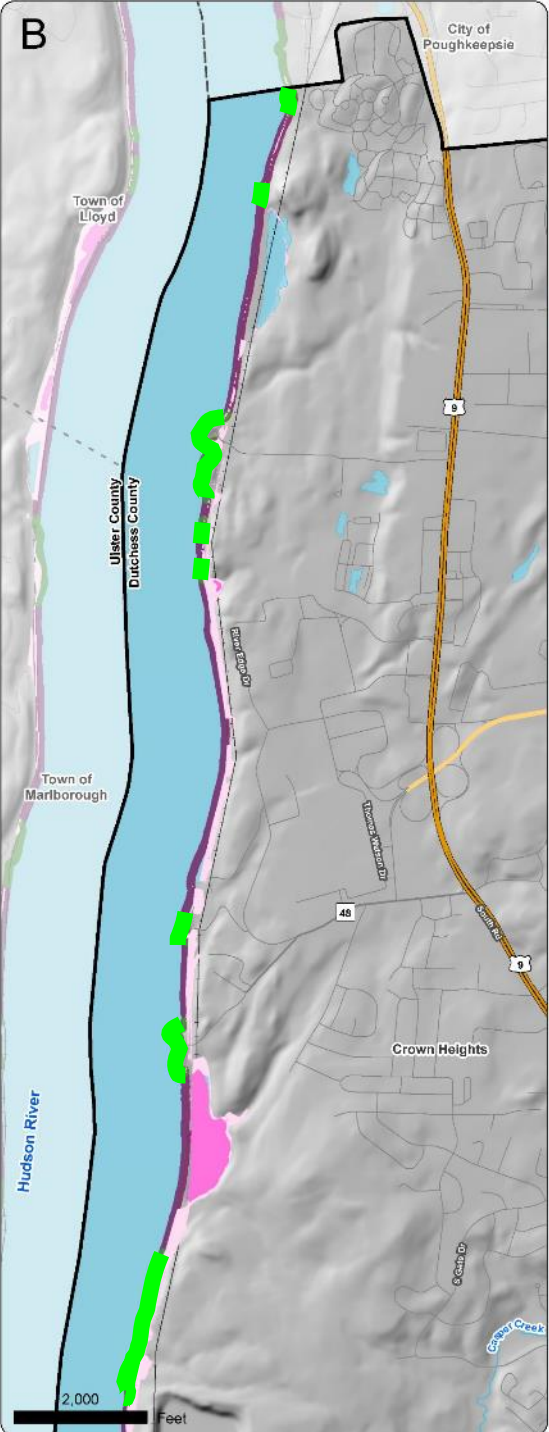
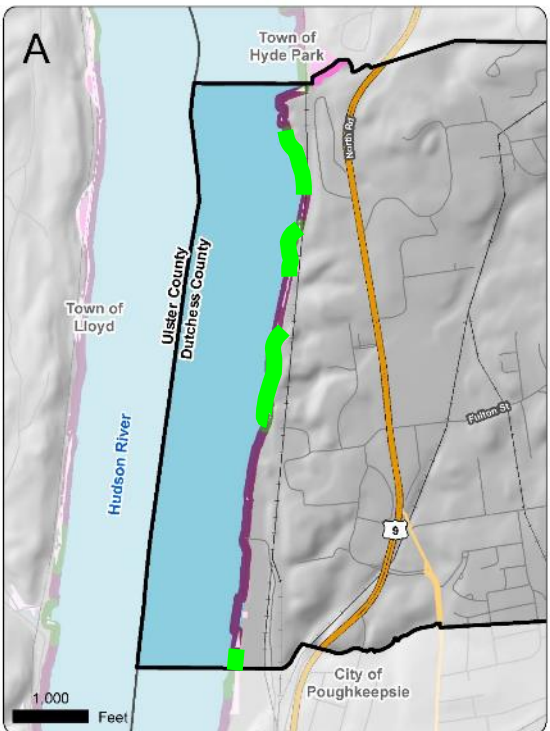
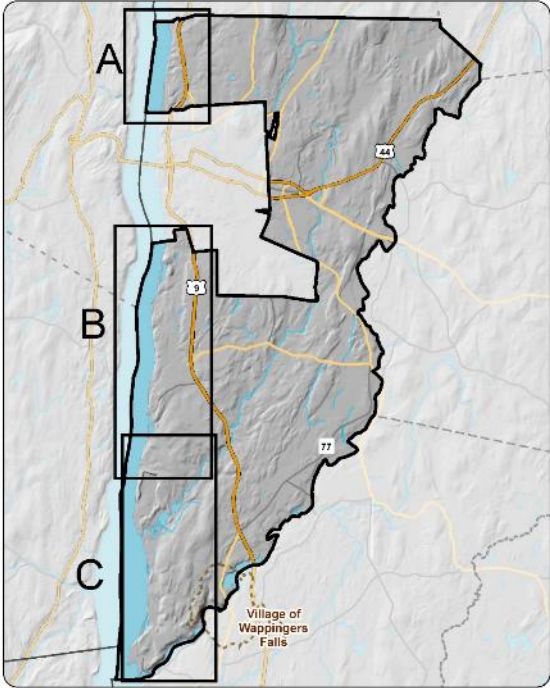
Hudson River Shoreline

LEGEND

-  Town of Poughkeepsie
-  County Boundary
-  City/Town Boundary
-  Village Boundary
-  Railroad
-  US Routes
-  State Routes
-  County Routes
-  Local Roads
-  Open Water
-  River/Stream
-  Tidal Wetlands
-  Tidal Wetland Pathways

Hudson River Shoreline Type

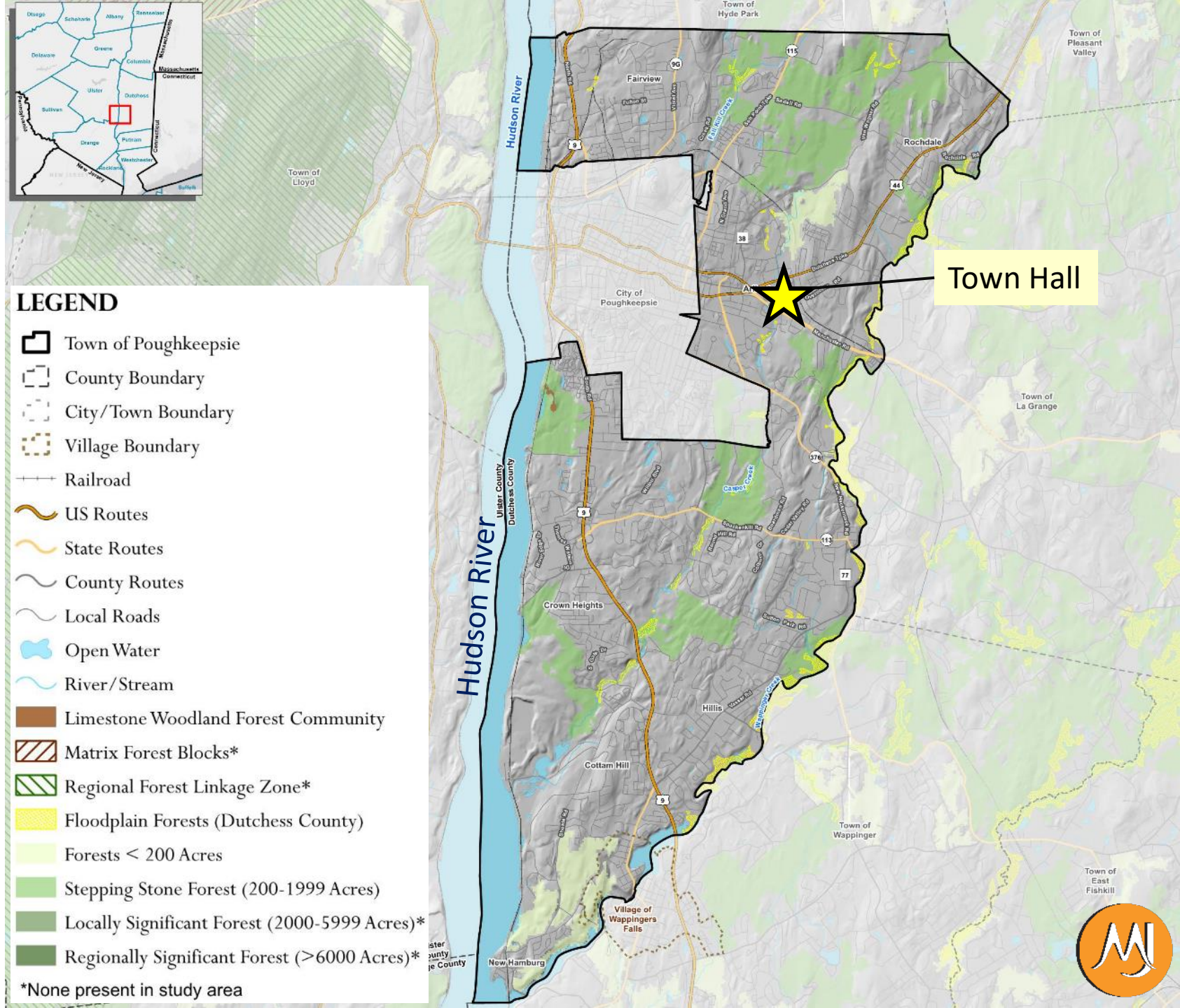
-  Hard Engineered
-  Natural Shoreline



[NRI MAPPING]

Large Forests

- Stepping Stone Forests
 - Smaller patches that enable wildlife to migrate between larger patches
 - 2,600 Acres
- Floodplain Forests
 - Forests on mineral soils on flat land or floodplains
 - 270 Acres
- Limestone Woodland Forest Community
 - Natural Heritage Program
 - 6 Acres



[NRI MAPPING]

Zoning & Tax Parcels

- 16 Zoning districts
- 8 Overlay districts

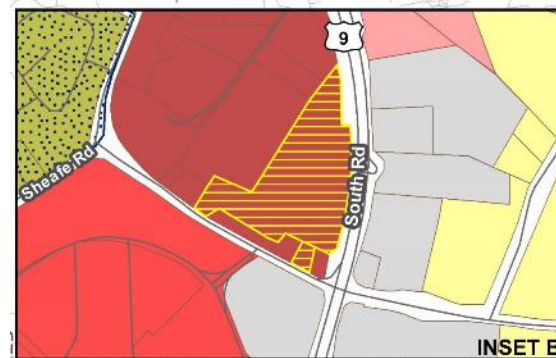
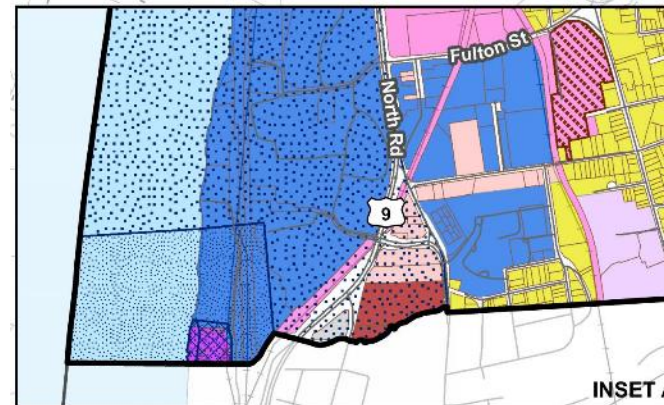
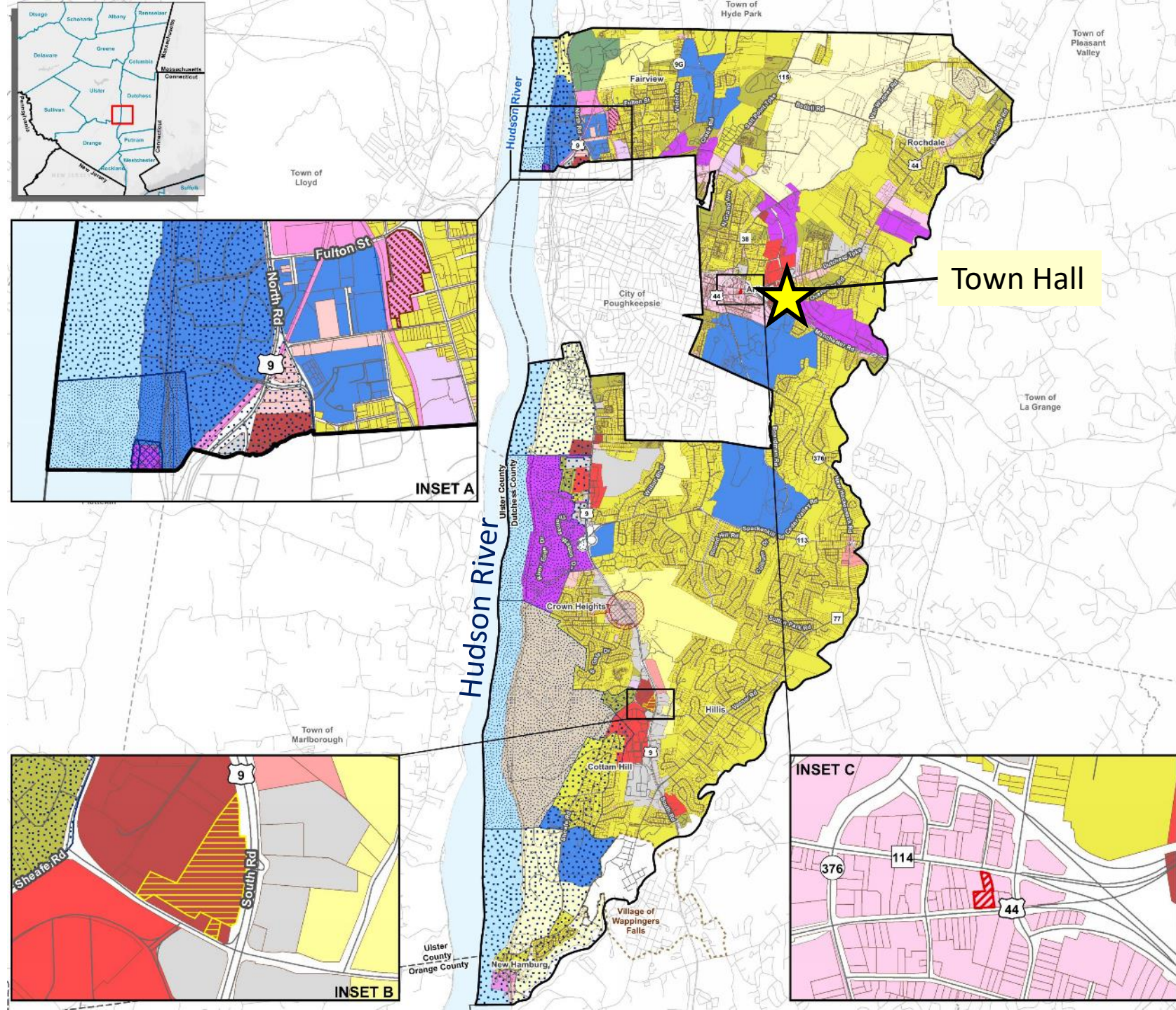
- Town of Poughkeepsie
- County Boundary
- City/Town Boundary
- Village Boundary
- Railroad
- Roads
- Hudson River
- Tax Parcel Boundaries

Overlay District

- Coastal Zone 1
- Coastal Zone 2
- Crown Heights Center Overlay
- CHCO Extended Overlay District
- Planned Residential Overlay District
- Main Street Drive-thru Overlay District
- Senior Housing Overlay District
- Waterfront Housing Overlay District

Zoning District

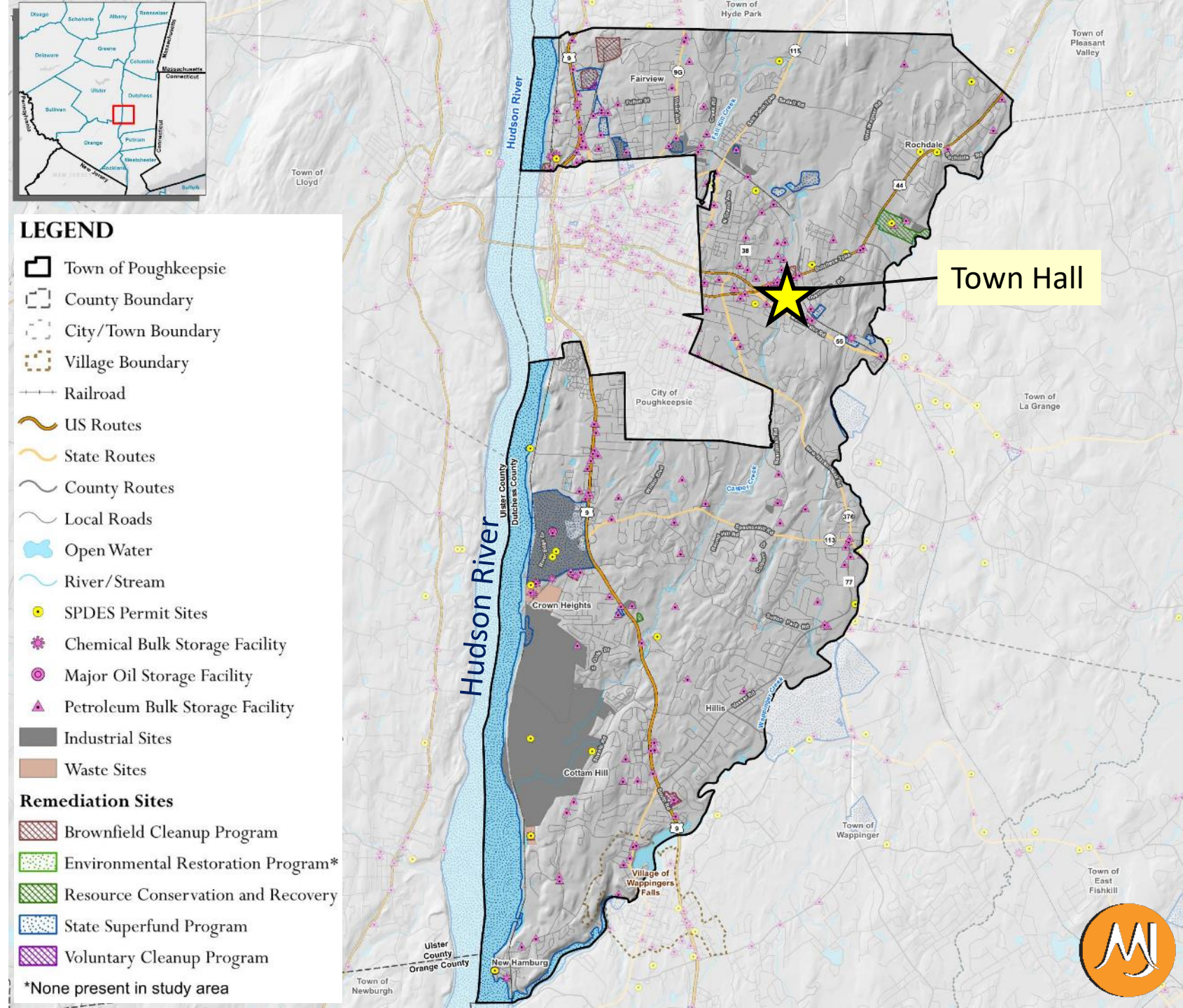
- Commercial - Neighborhood
- Commercial - General Business
- Commercial - Shopping Center
- Commercial - Highway Business
- Hamlet Core / Mixed Use
- Hamlet Residential
- Historic Preservation
- Industrial - Extractive
- Industrial - Light
- Industrial - Heavy
- Institutional / Medical
- Office / Research Planned Development
- Residential Multi-Family
- Residential Under 1
- Residential 1-3
- Residential 4-5



[NRI MAPPING]

Brownfields, Waste Sites & Regulated Facilities

- State Pollutant Discharge Elimination System (SPDES)
 - Waste/ Stormwater discharges
 - 21 Sites
- Bulk Storage Facilities
 - Chemical - 11 Sites
 - Major Oil – 2 Sites
 - Petroleum – 157 Sites

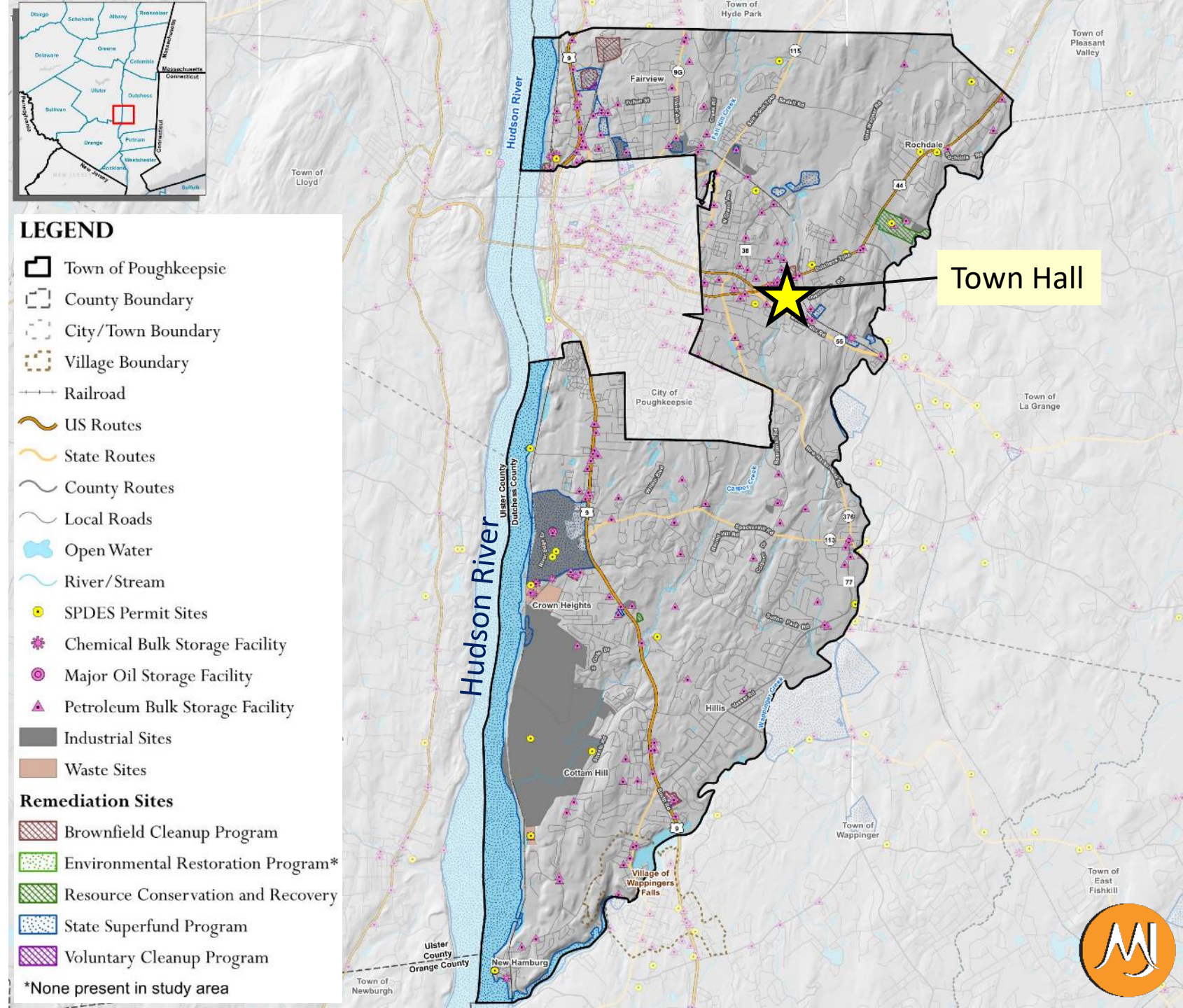


[NRI MAPPING]

Brownfields, Waste Sites & Regulated Facilities

Remediation Sites

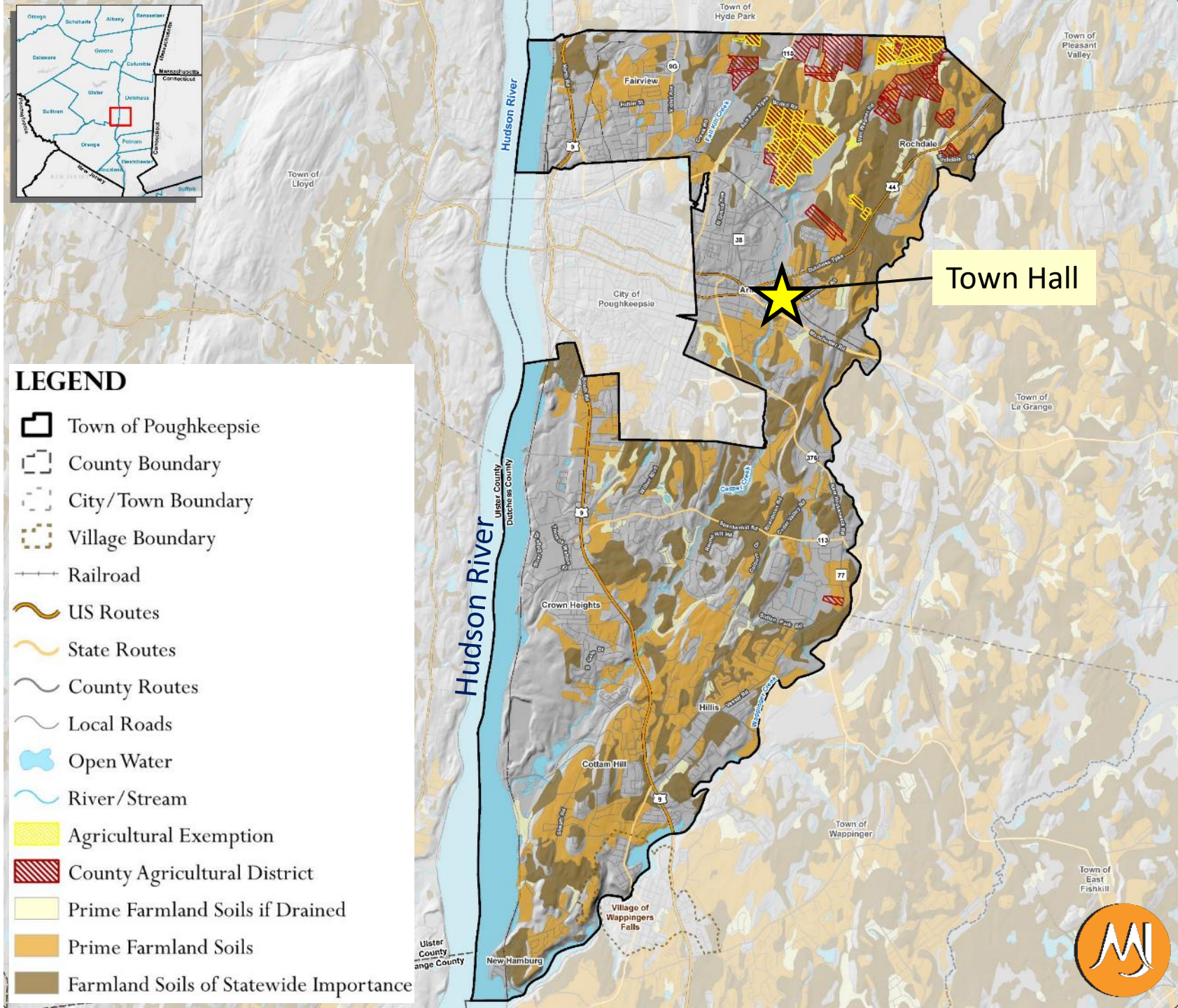
- Brownfield Cleanup
 - Larger Sites:
 - Hudson River Psych
- State Superfund Sites
 - Larger Sites:
 - Hudson River PCBs
 - IBM Plant
 - Wappinger Creek sediments



[NRI MAPPING]

Agricultural Resources

- Prime Farmland Soils
 - Classification by USDA, based on soil type, drainage
 - 4350 Ac Prime Farmland
 - 4360 Ac Farmland of Statewide Importance
- County Agricultural District
 - District #22 (860 Acres)
- Agricultural Exemption
 - 400 Acres





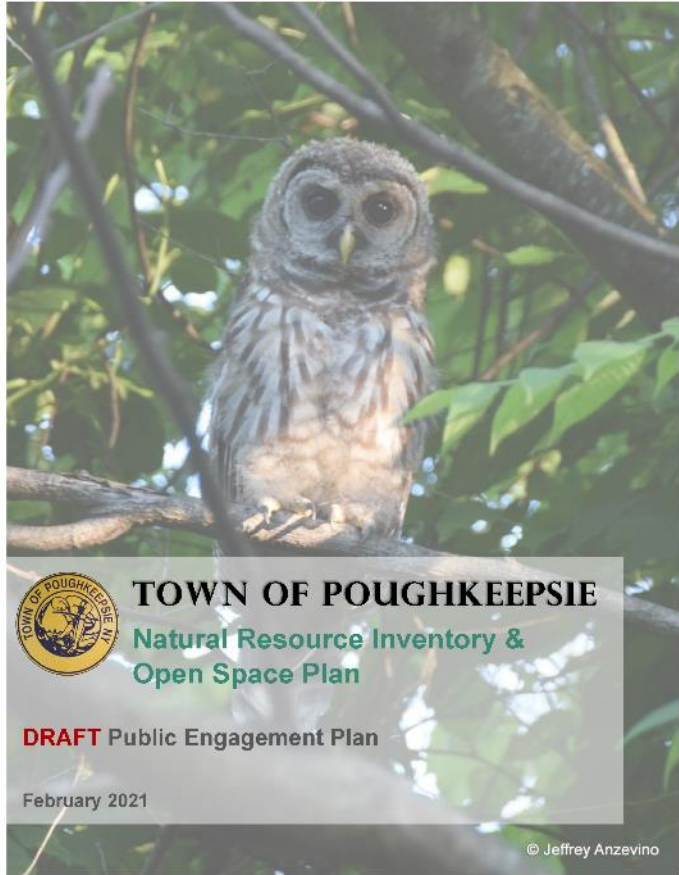
PUBLIC ENGAGEMENT

[PUBLIC ENGAGEMENT]

- **Community Engagement Plan**
- Establishes communication channel between the Public, Town, Committee and Project Team
- Outlines preliminary schedule
- Overview of activities including:
 - Project website/social media
 - Open Space Survey
 - Stakeholder Group Meetings
 - Public Workshops (3)

Town of Poughkeepsie NRI & Open Space Plan
Public Engagement Publicity Distribution Table

Publicity Method	Format	Responsible Party	Contact	Timeframe
Print Media	<ul style="list-style-type: none"> Press release to be distributed to newspapers of record through Town's existing publicity contacts including: <ul style="list-style-type: none"> Mid-Hudson News Southern Dutchess News 	<ul style="list-style-type: none"> MI to draft press release and provide to Town. Town to submit to news media through existing publicity distribution protocol 	Town Contact – Joyce Longi (Supervisors Office) (845) 485-3607	3 weeks prior to meeting
Social Media	<ul style="list-style-type: none"> Town Facebook page Climate Smart Task Force Facebook Page 	<ul style="list-style-type: none"> MI to provide language and materials for social media posts. Climate Smart Task Force to post to social media. Town Recreation Department to post to social media. 	Town Contact – Joyce Longi (Supervisors Office) (845) 485-3607 Climate Smart Taskforce – Susan Karmes Hecht	2 weeks prior with reminder 1 week prior
Web Media	<ul style="list-style-type: none"> Town website Project Website 	<ul style="list-style-type: none"> MI to provide language and materials to Town for Town website MI to update and maintain project website 	Pam Kingsley to Coordinate with Town	2 – 3 weeks prior to meeting
Cable Media	<ul style="list-style-type: none"> Town Cable Channel 	<ul style="list-style-type: none"> Town 		2-3 days prior
Radio				2-3 days prior
Community Organizations/Businesses				1 week prior



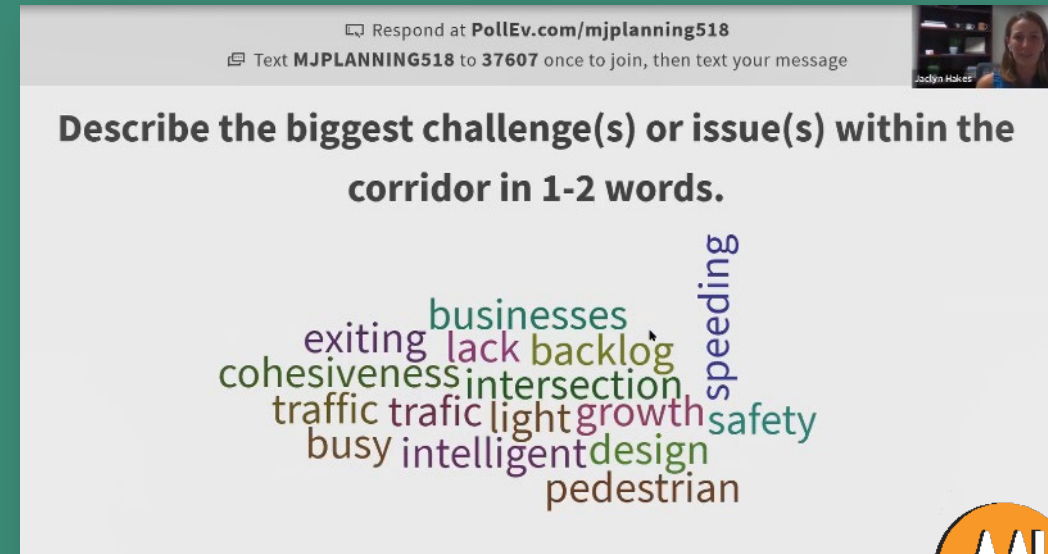
[PUBLIC ENGAGEMENT]

- **Public Engagement Event #1**
 - Wednesday, March 31st at 7:00 PM
 - Interactive, virtual engagement event
 - Introduce the project
 - Present preliminary Draft NRI mapping
 - Gather input about important natural resources in the community



[PUBLIC ENGAGEMENT]

- **Format**
 - Virtual format through Zoom Webinar
 - Brief Presentation
 - Overview of NRI mapping
 - Live Survey Polling
 - Q&A





NEXT STEPS

[NEXT STEPS]

- DRAFT NRI Mapping
- Public Engagement Event #1 – March 31st at 7:00 PM
- Identification of Stakeholders
- Draft Online Survey
- Steering Committee Meeting #4 – May 24th at 7:00 PM



© Jeffrey Anzevino

Photo Credit: Jeffrey Anzevino

